

INTRODUCTION TO

Pro/ENGINEER Wildfire 2.0

By: David S. DeWolf

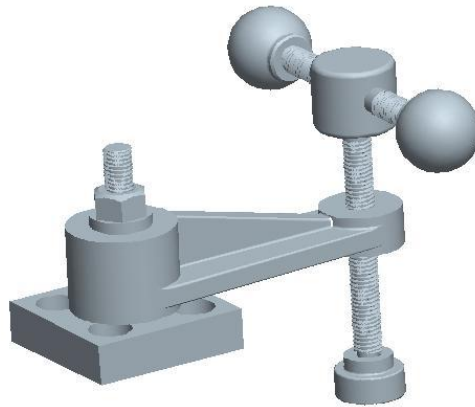
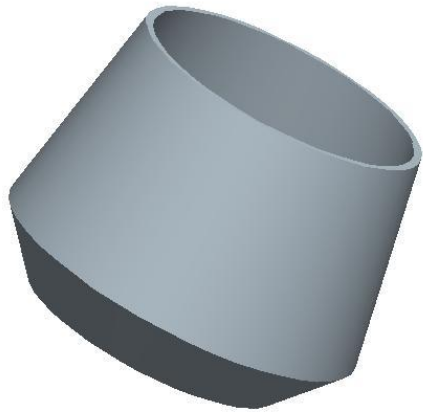
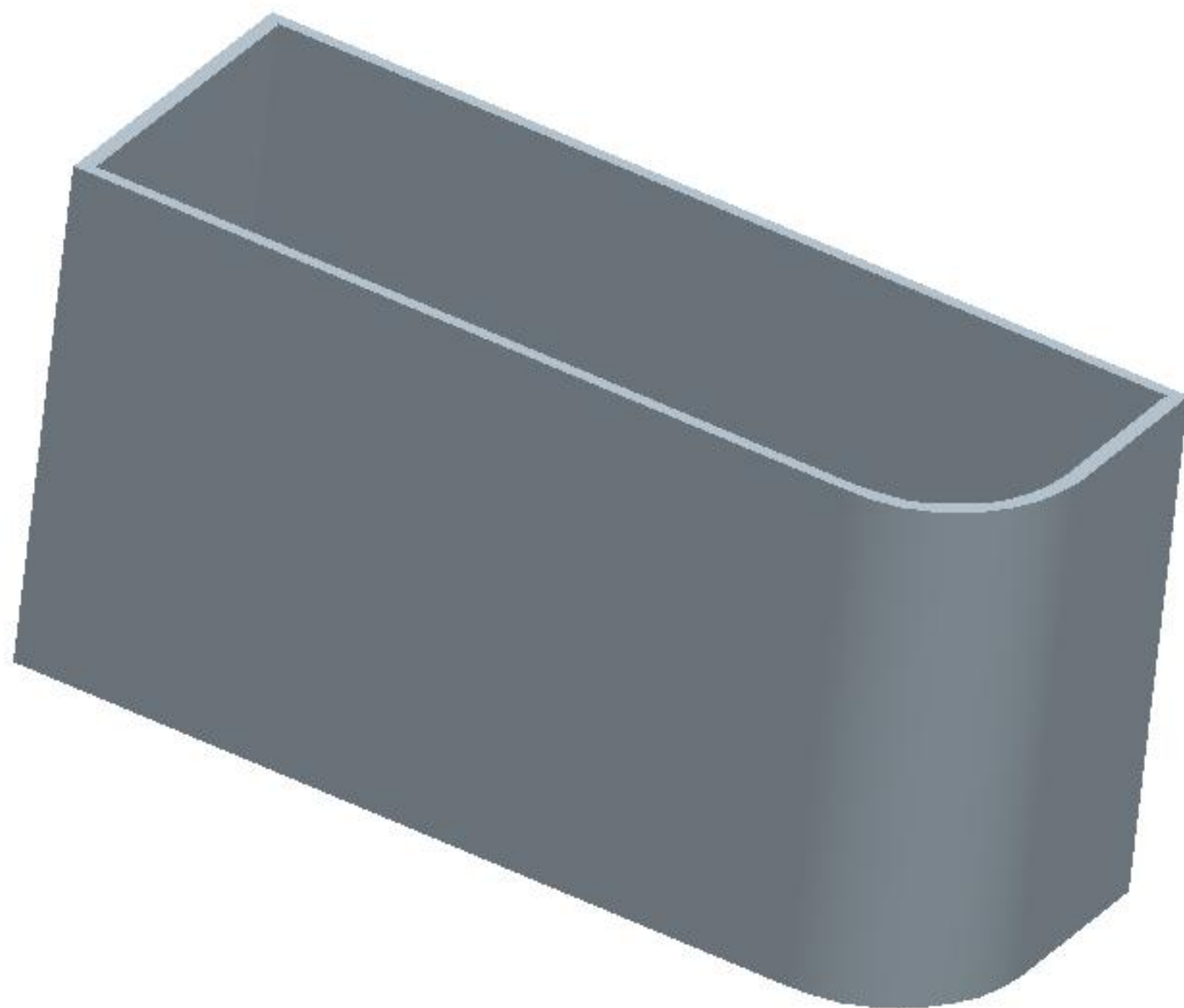


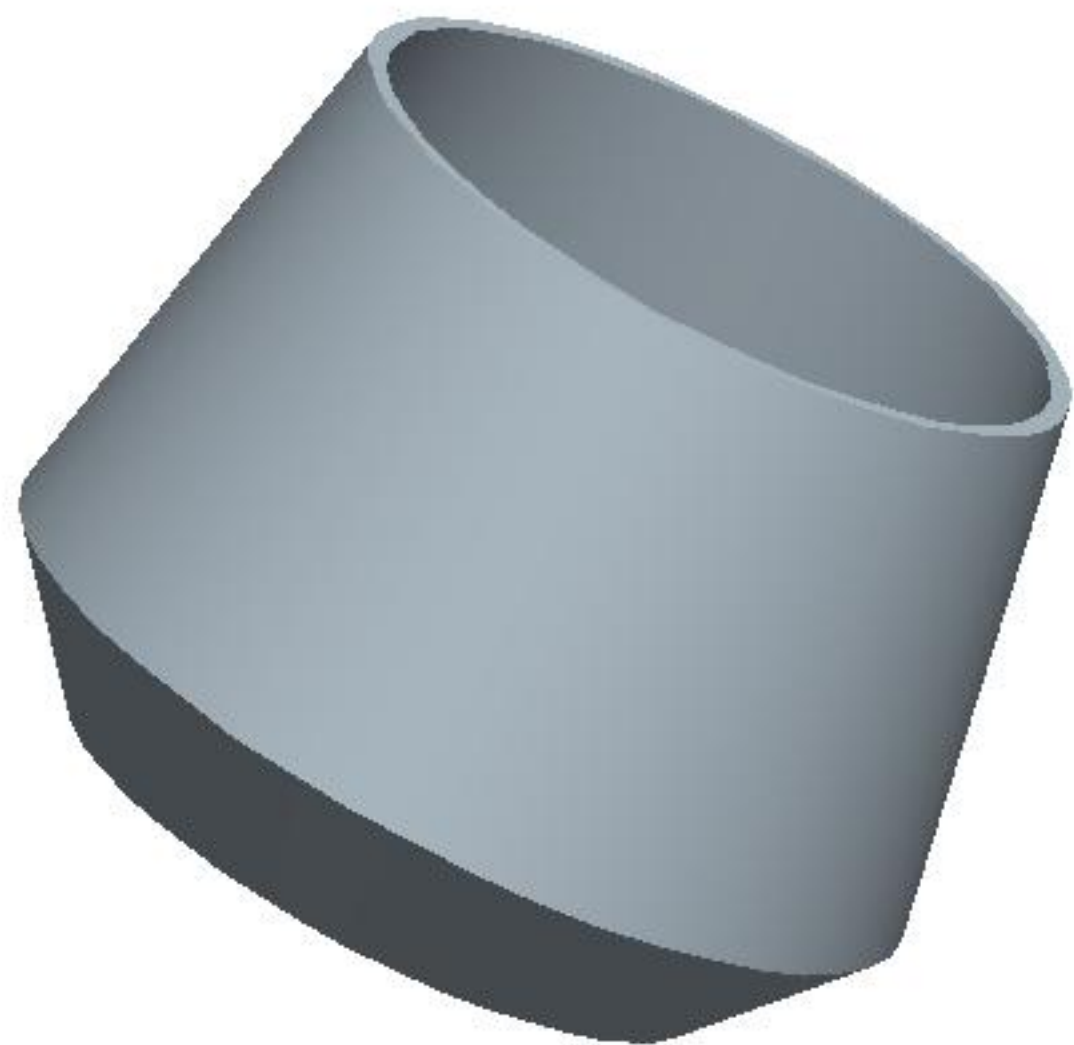
Table of Contents

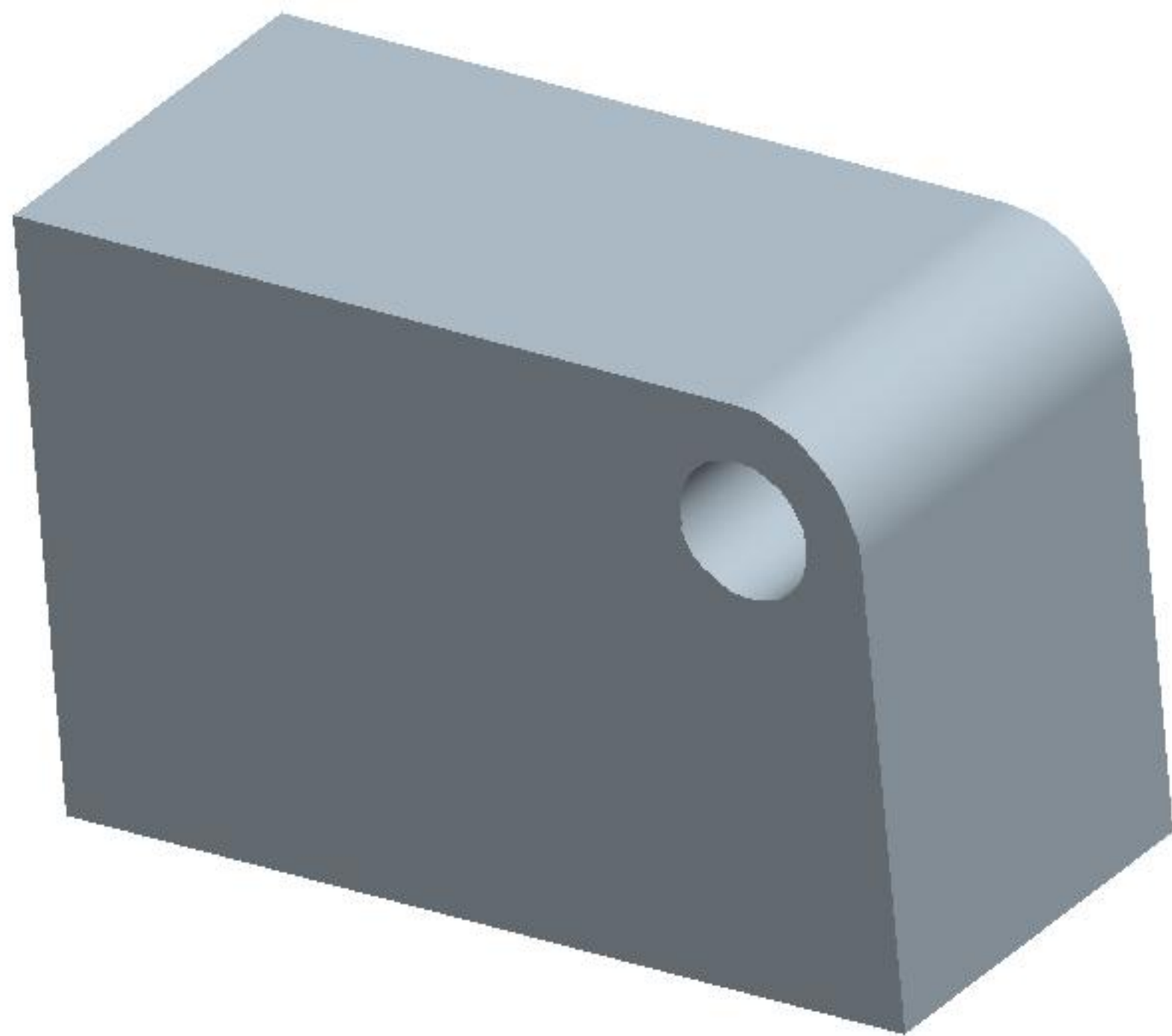
2	Direct Modeling	1
3	Extrusions	10
4	Datum and Layers	12
5	Revolved Features	14
6	Feature Operations	21
7	Assemblies	23
8	Part Drawings	28
9	Assembly Drawings	31
10	More Direct Modeling	36
11	Extra Exercises	46

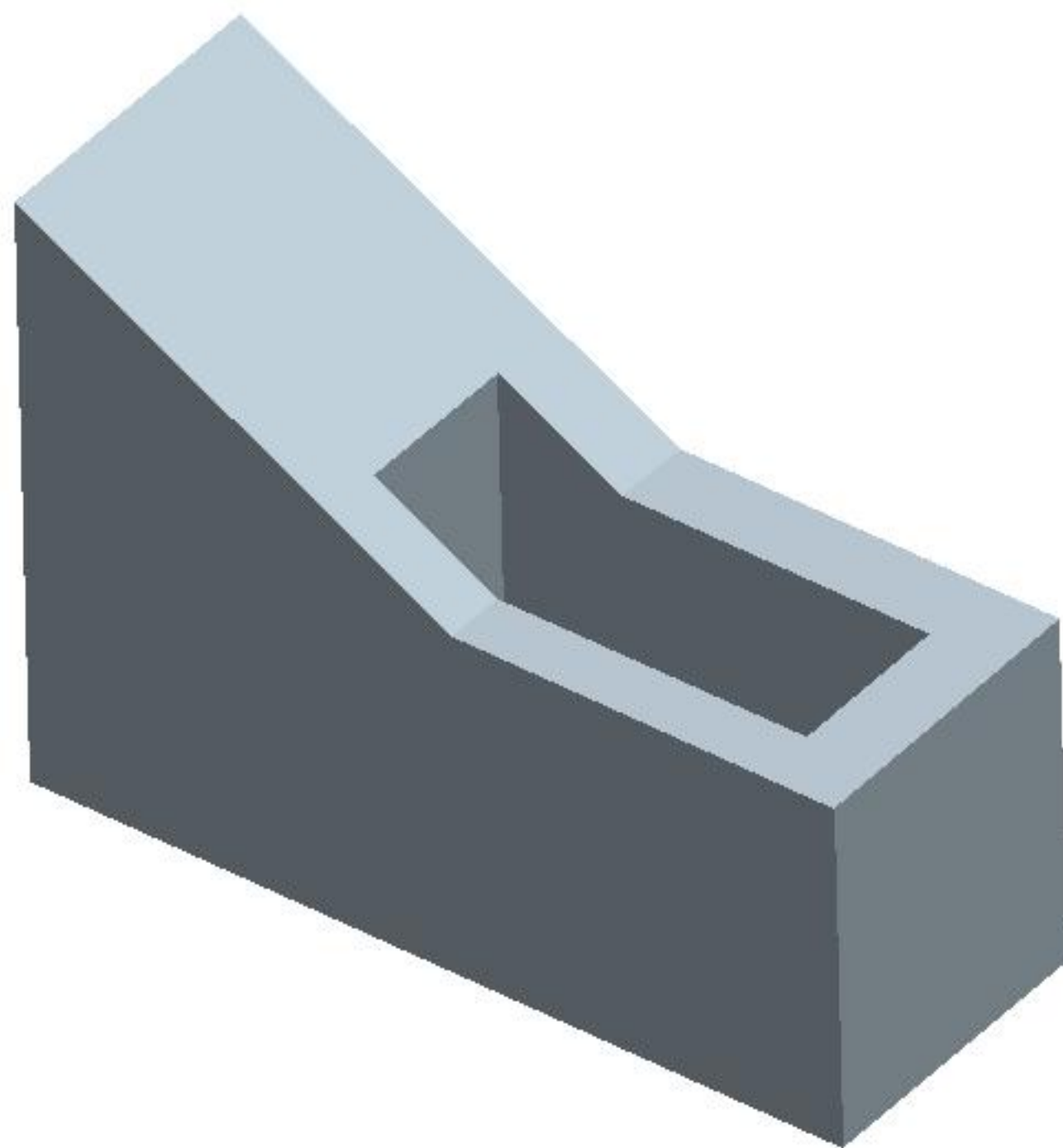
LESSON 2 – Direct Modeling

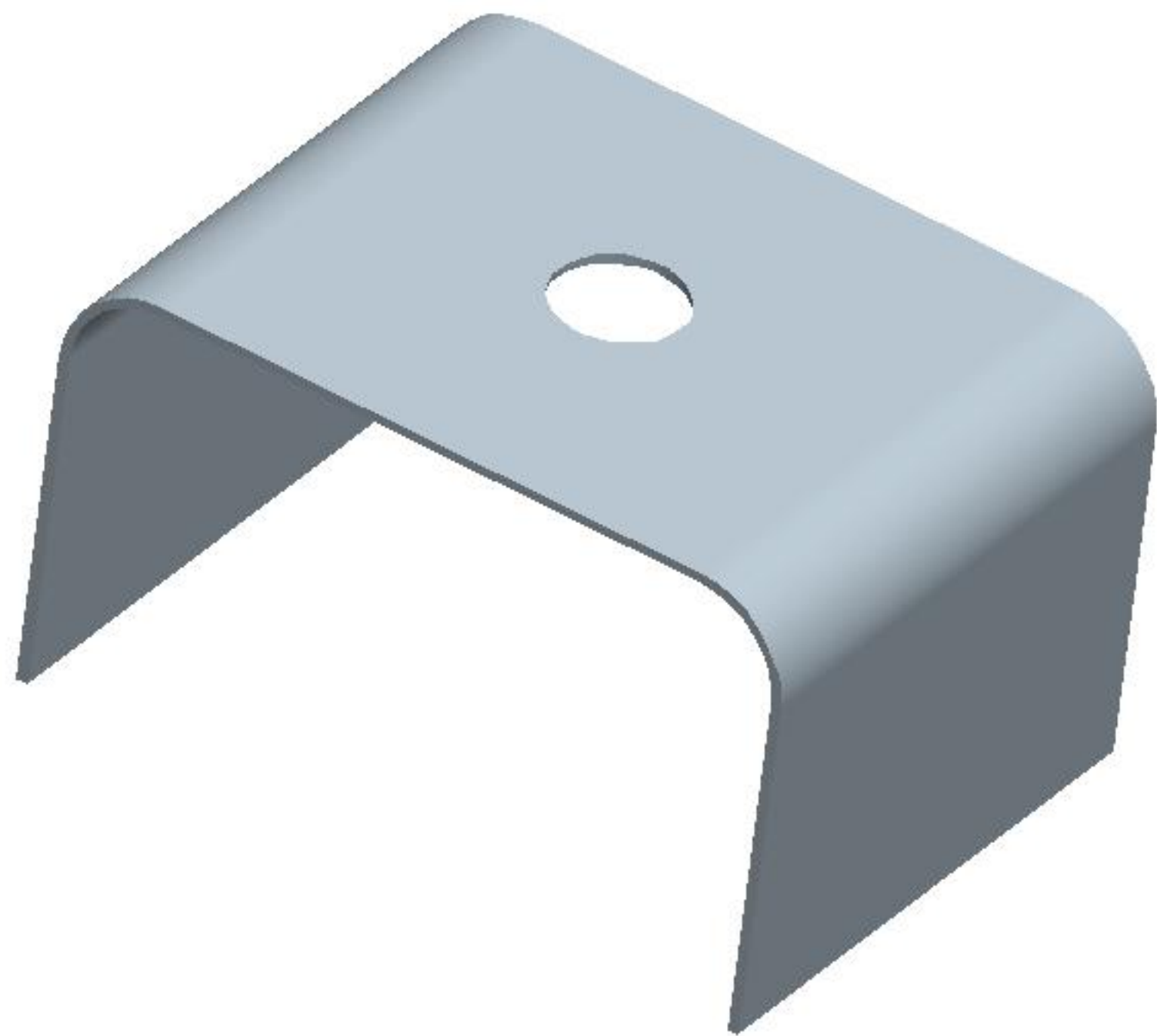


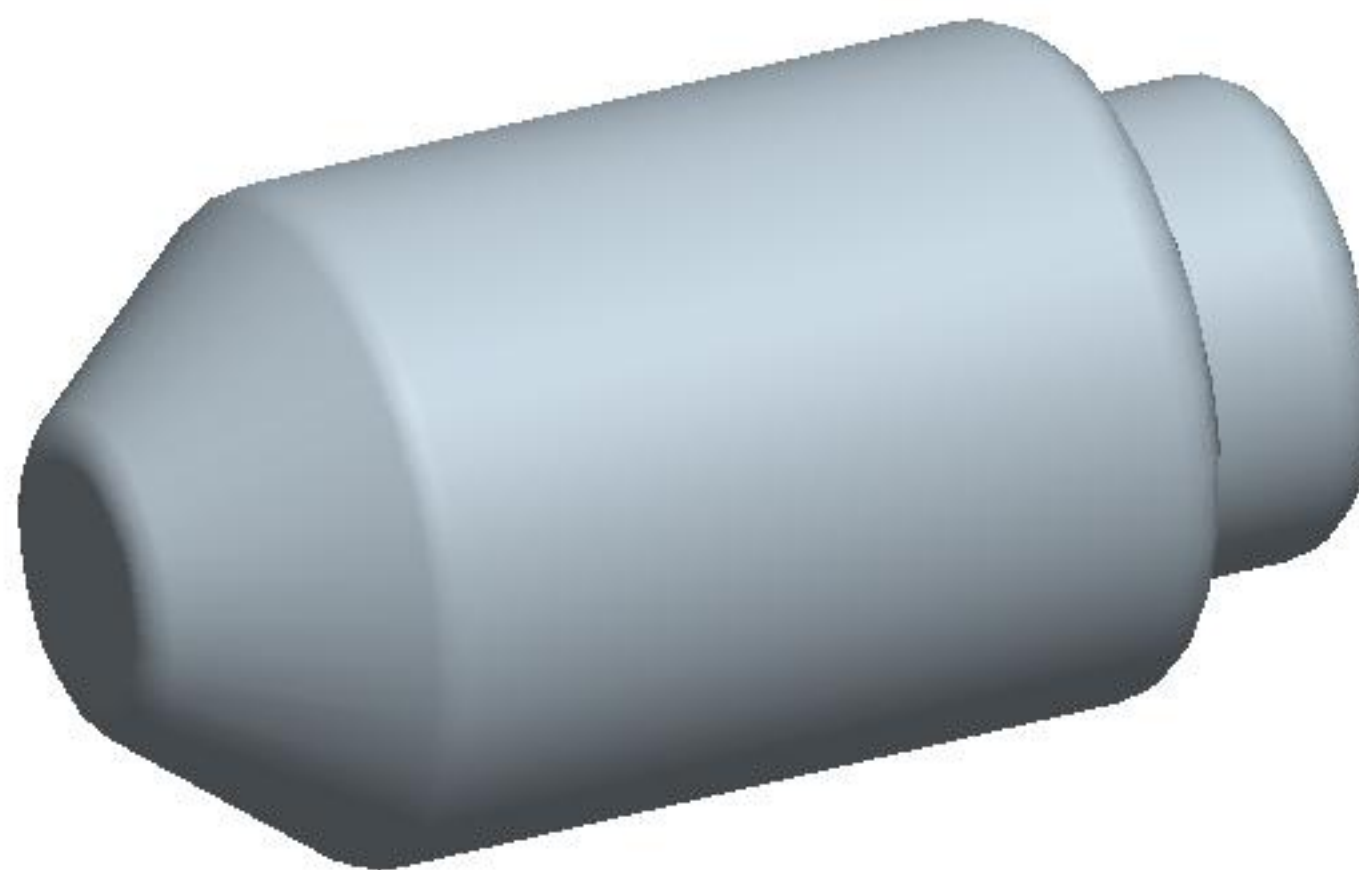


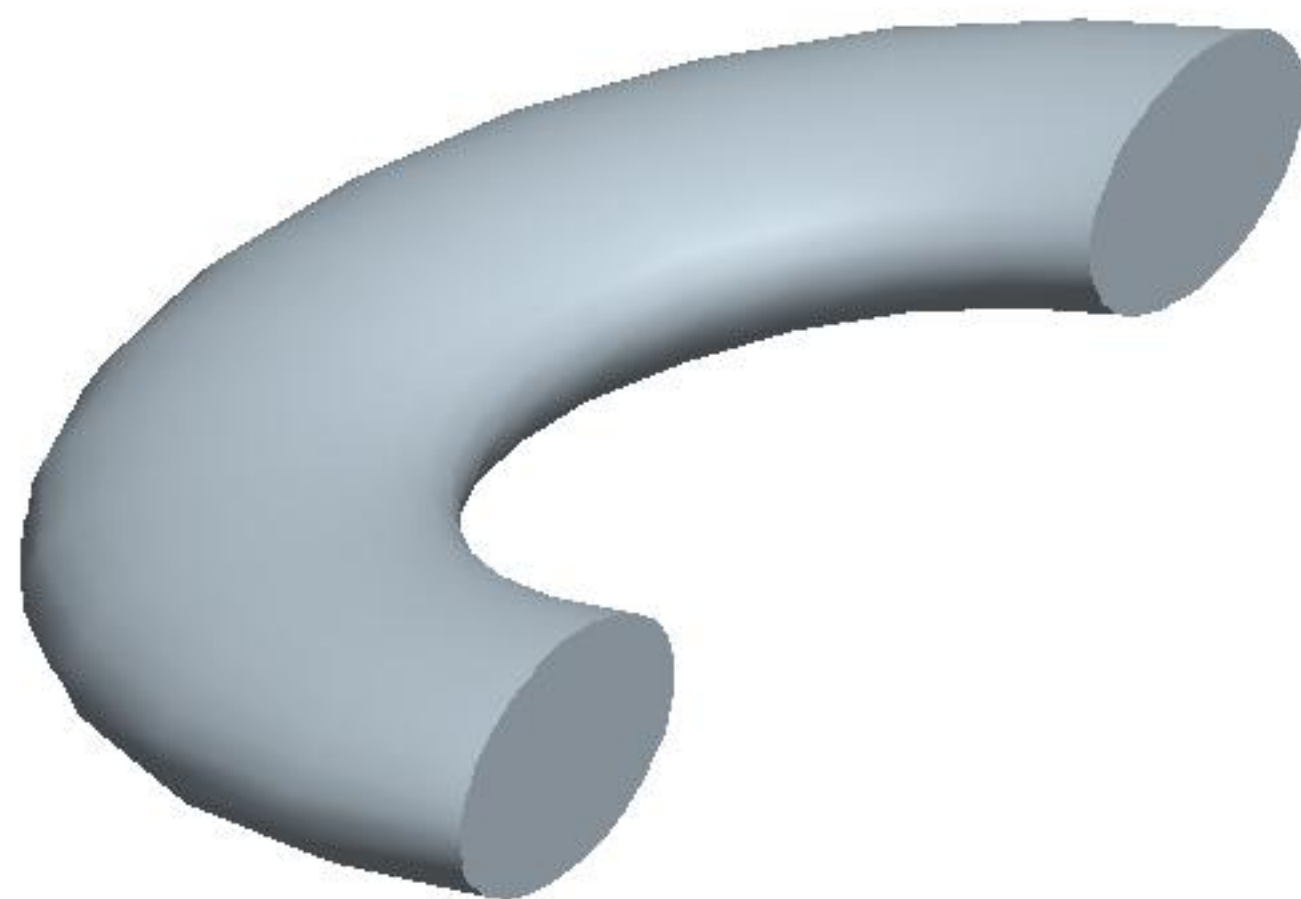


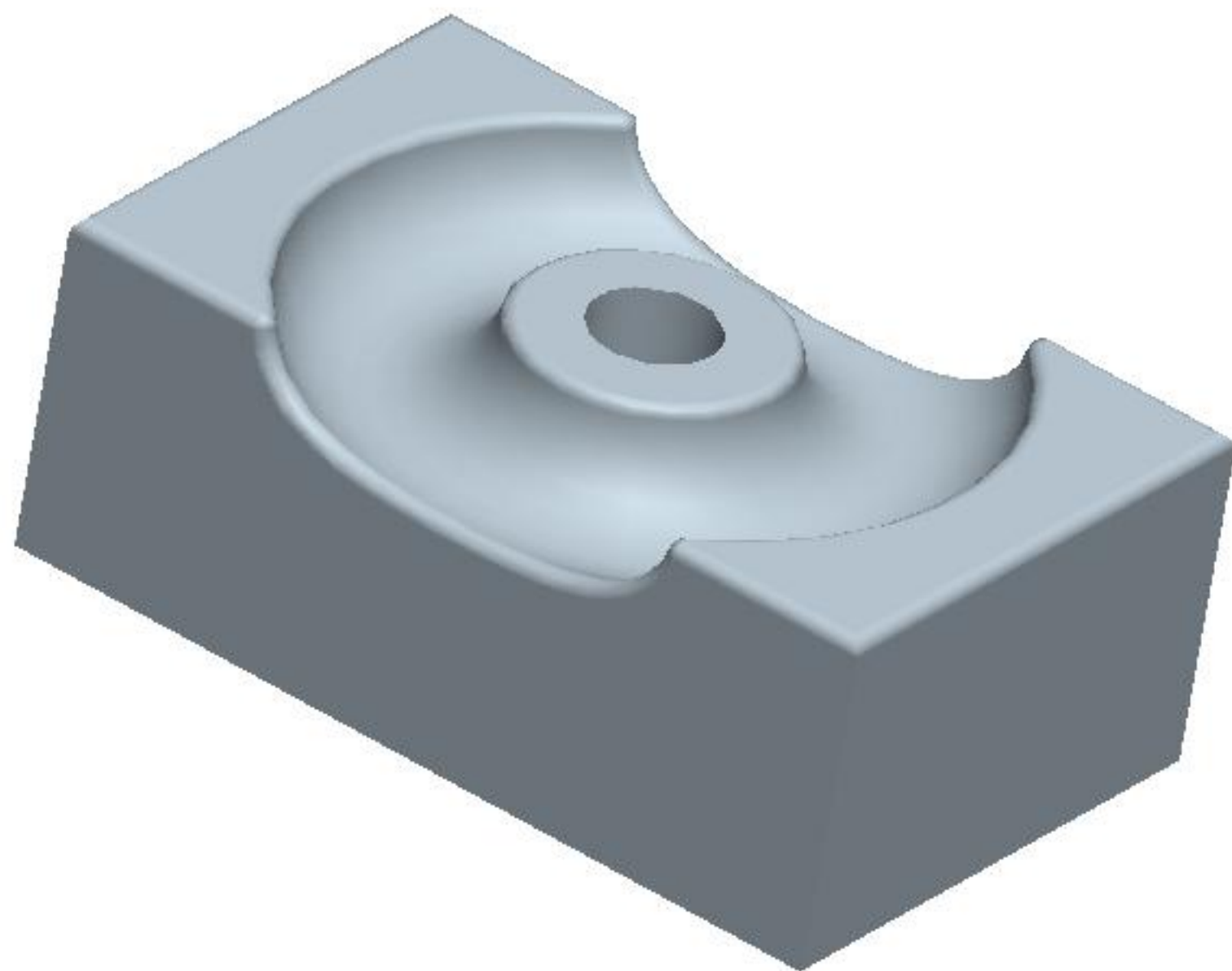




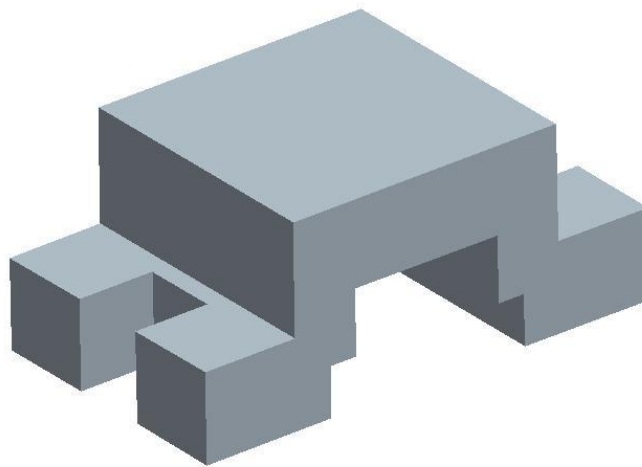


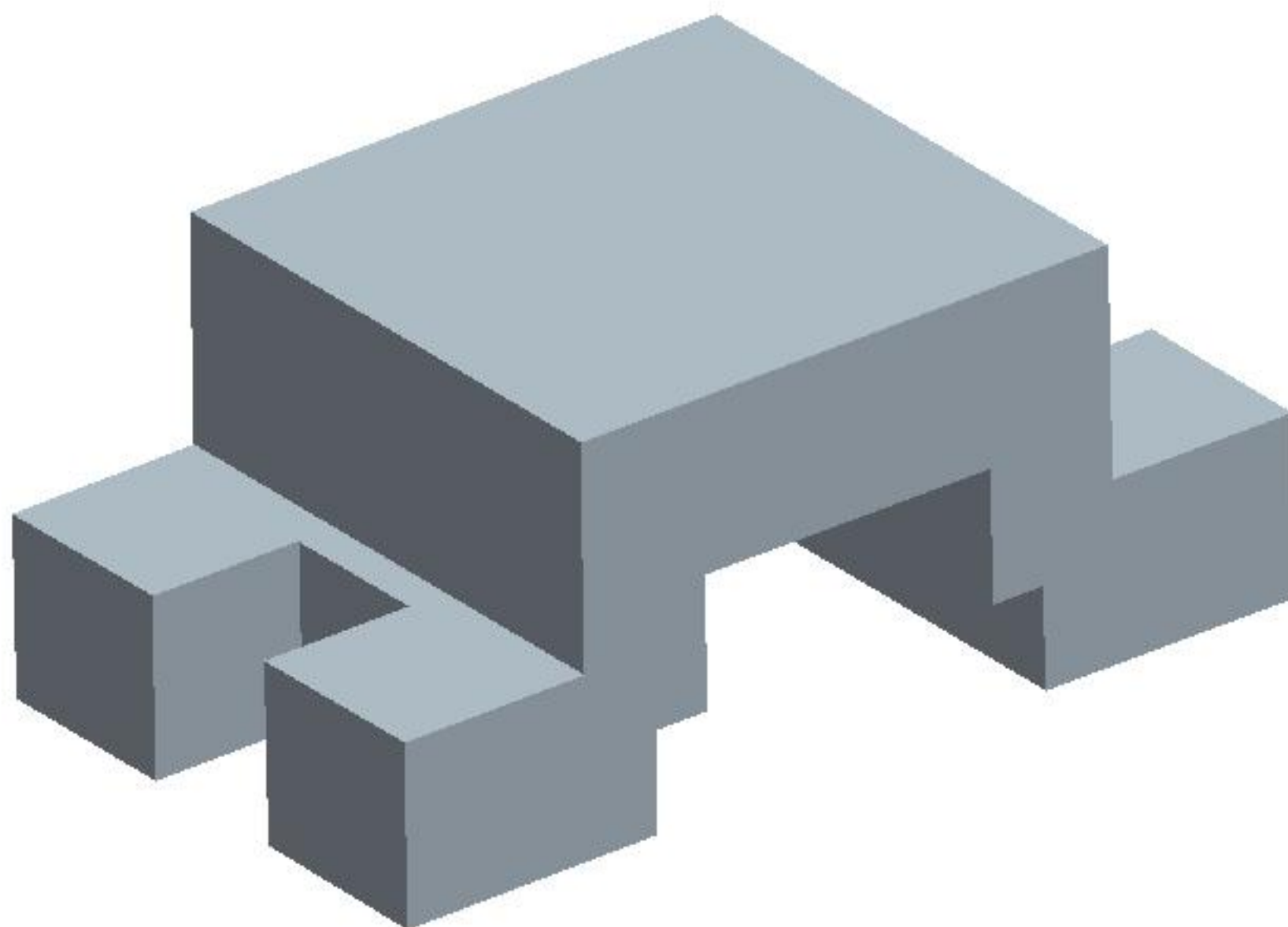




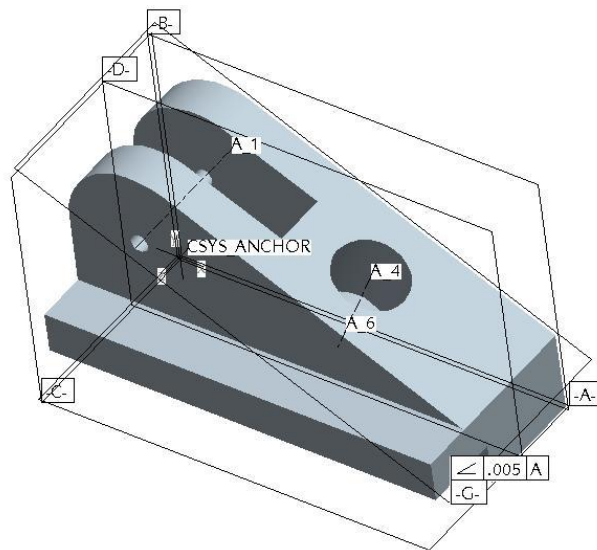


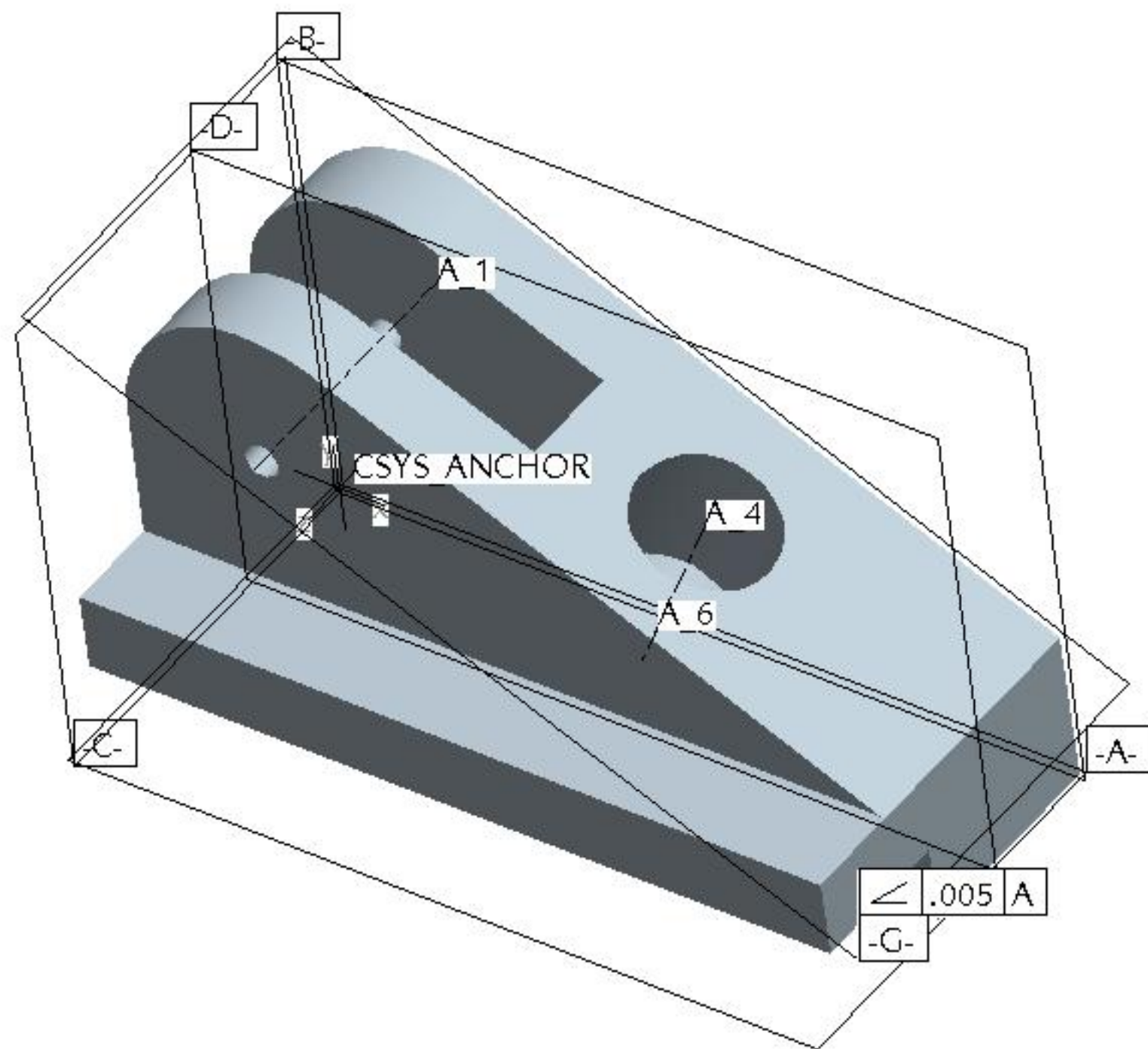
LESSON 3 – Extrusions





LESSON 4 – Datum and Layers

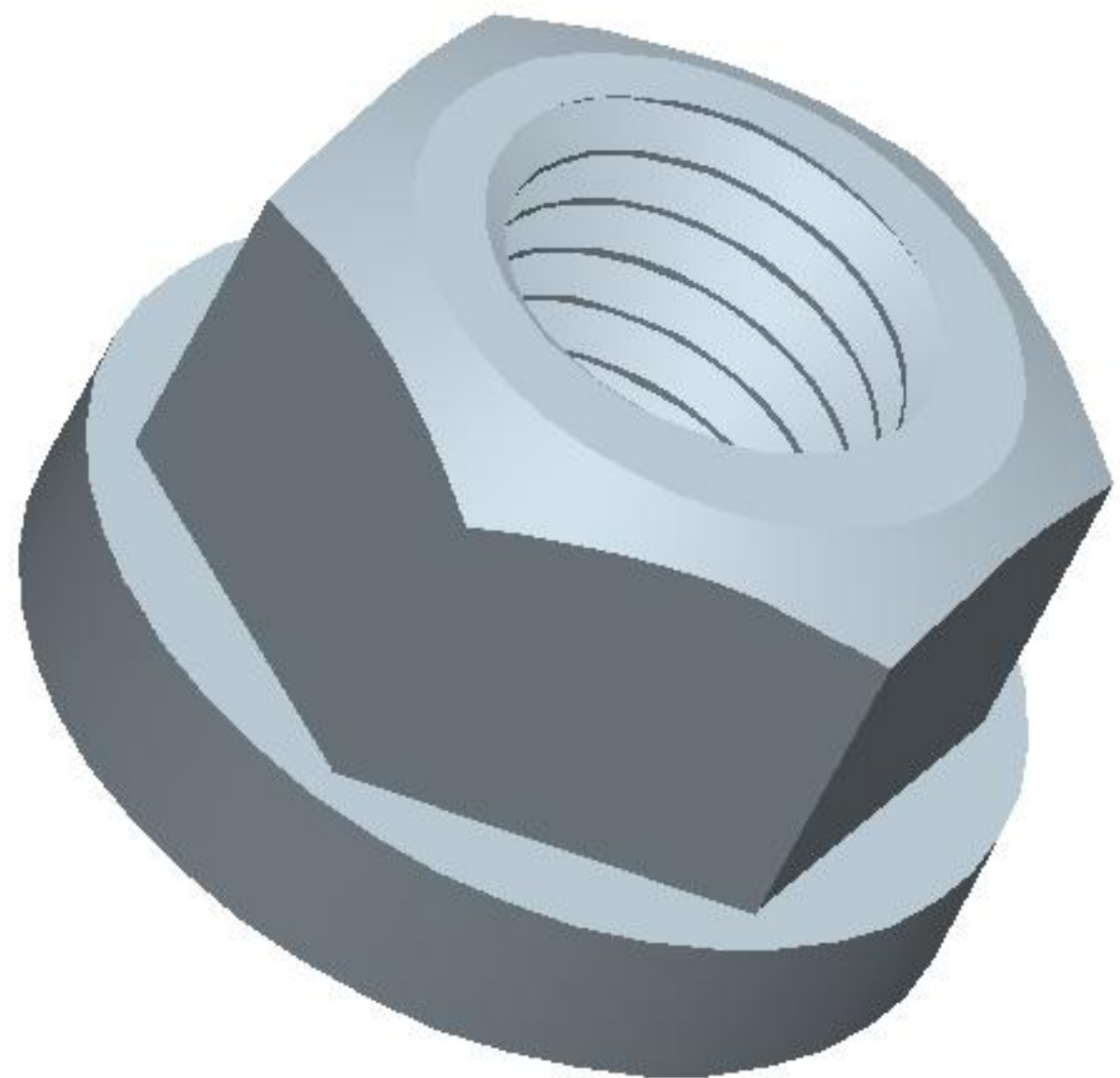


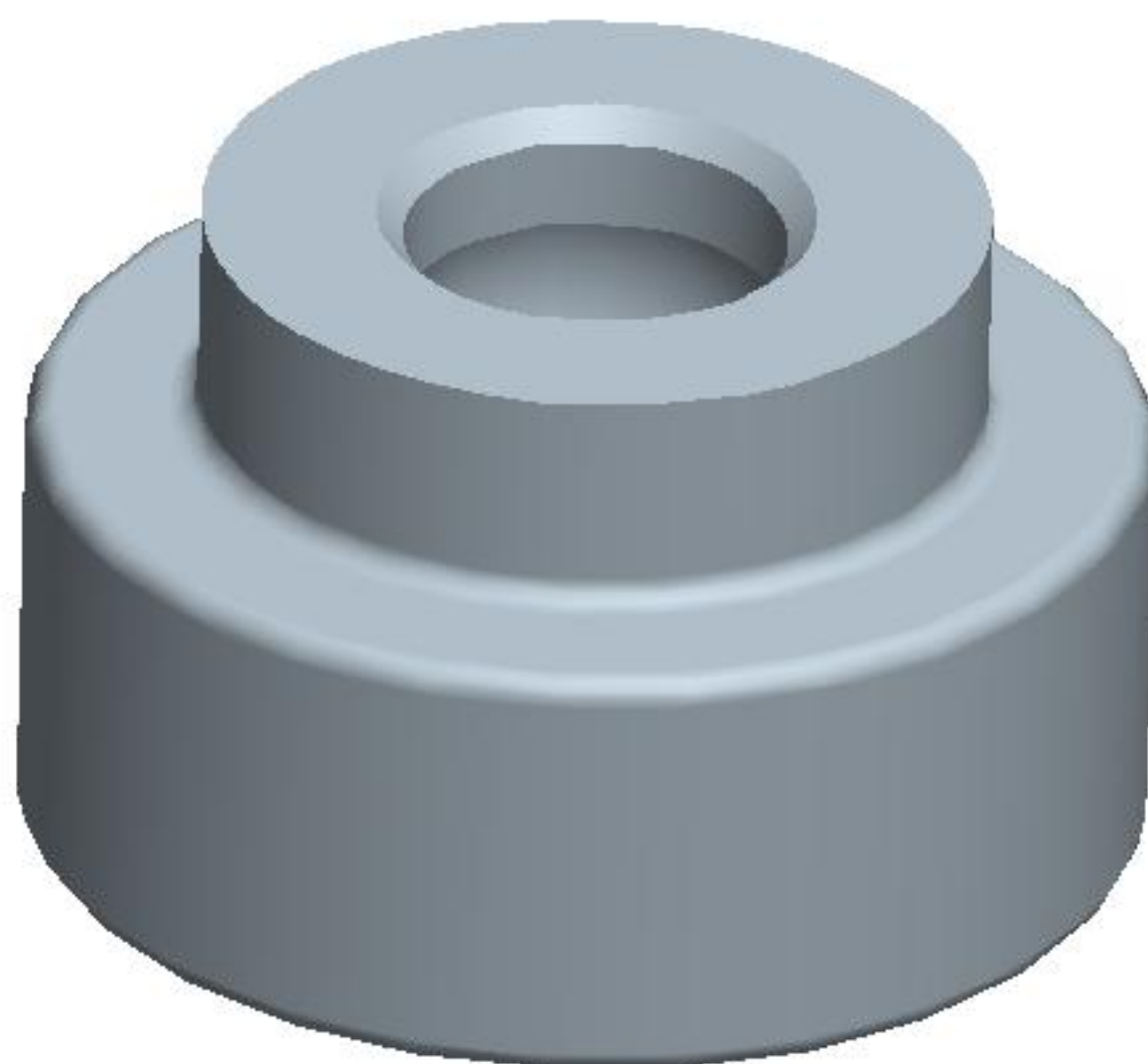


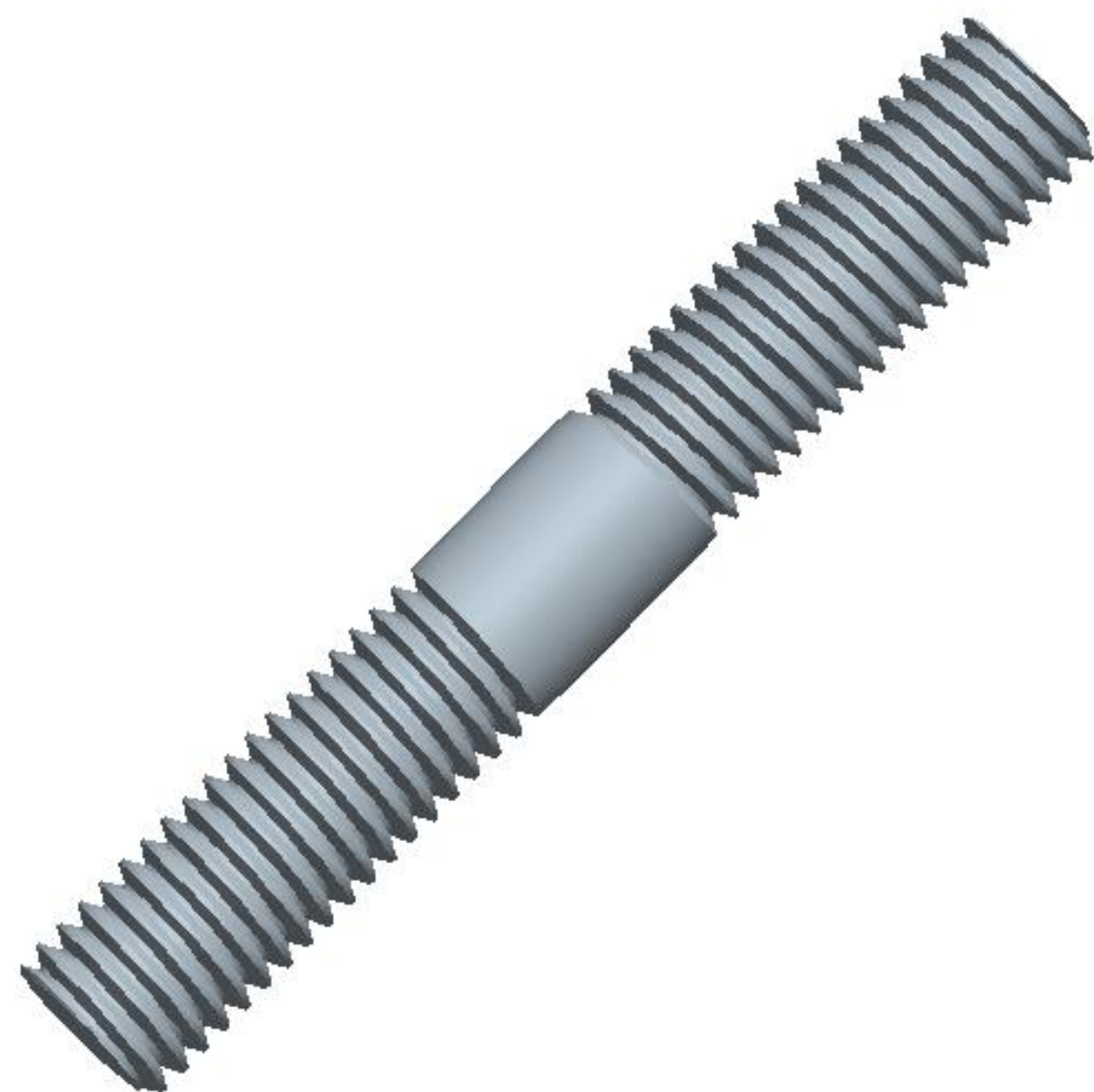
LESSON 5 – Revolved Features

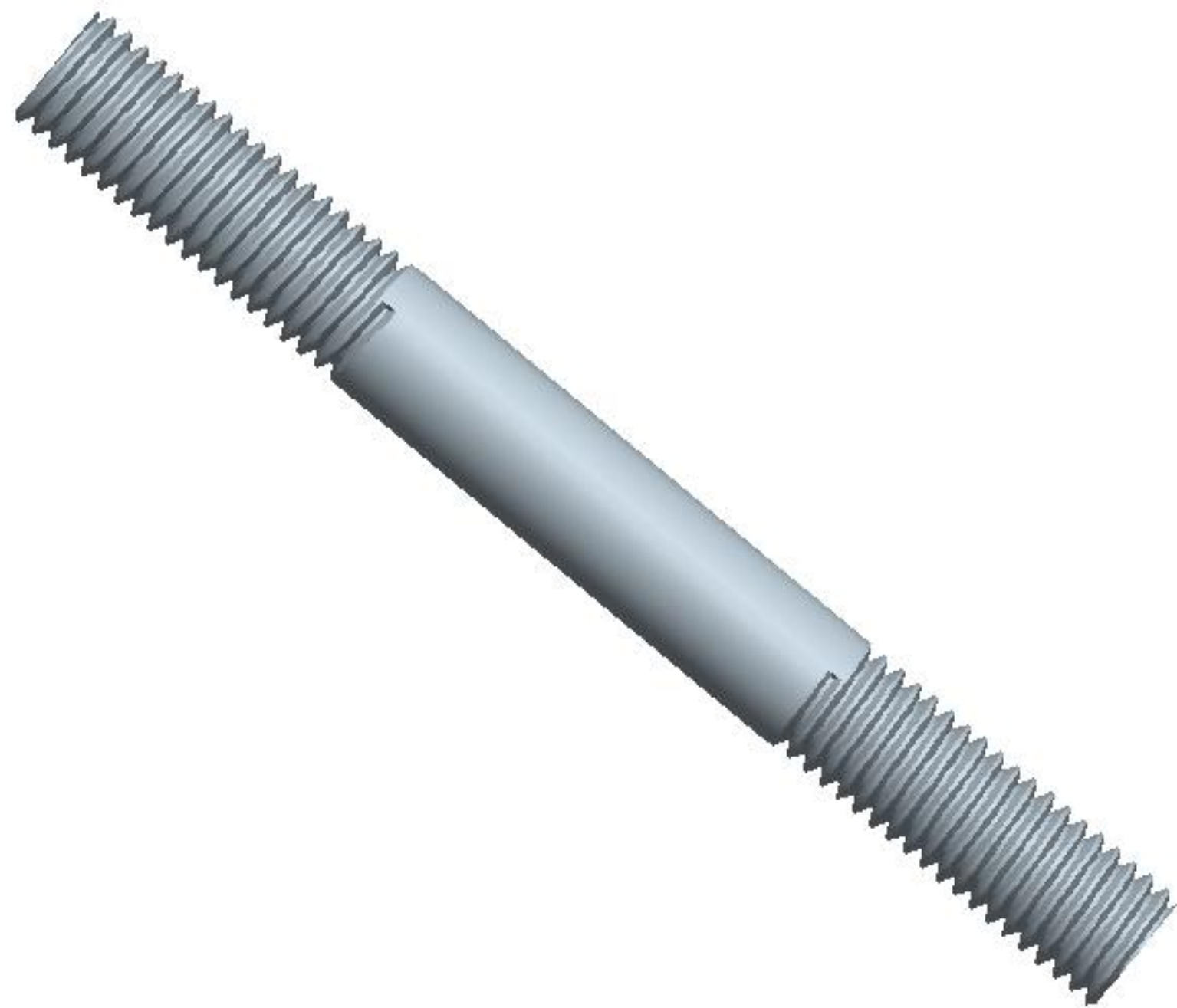


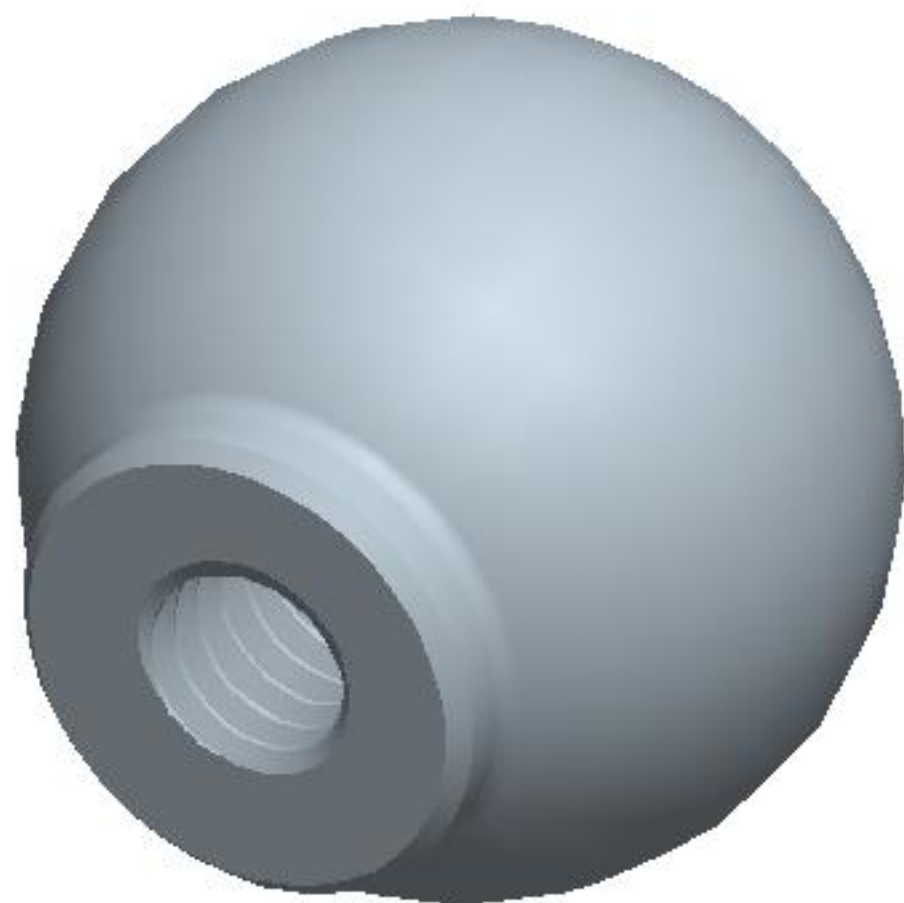




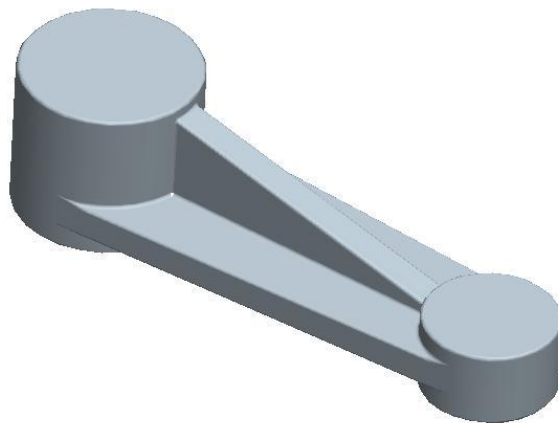




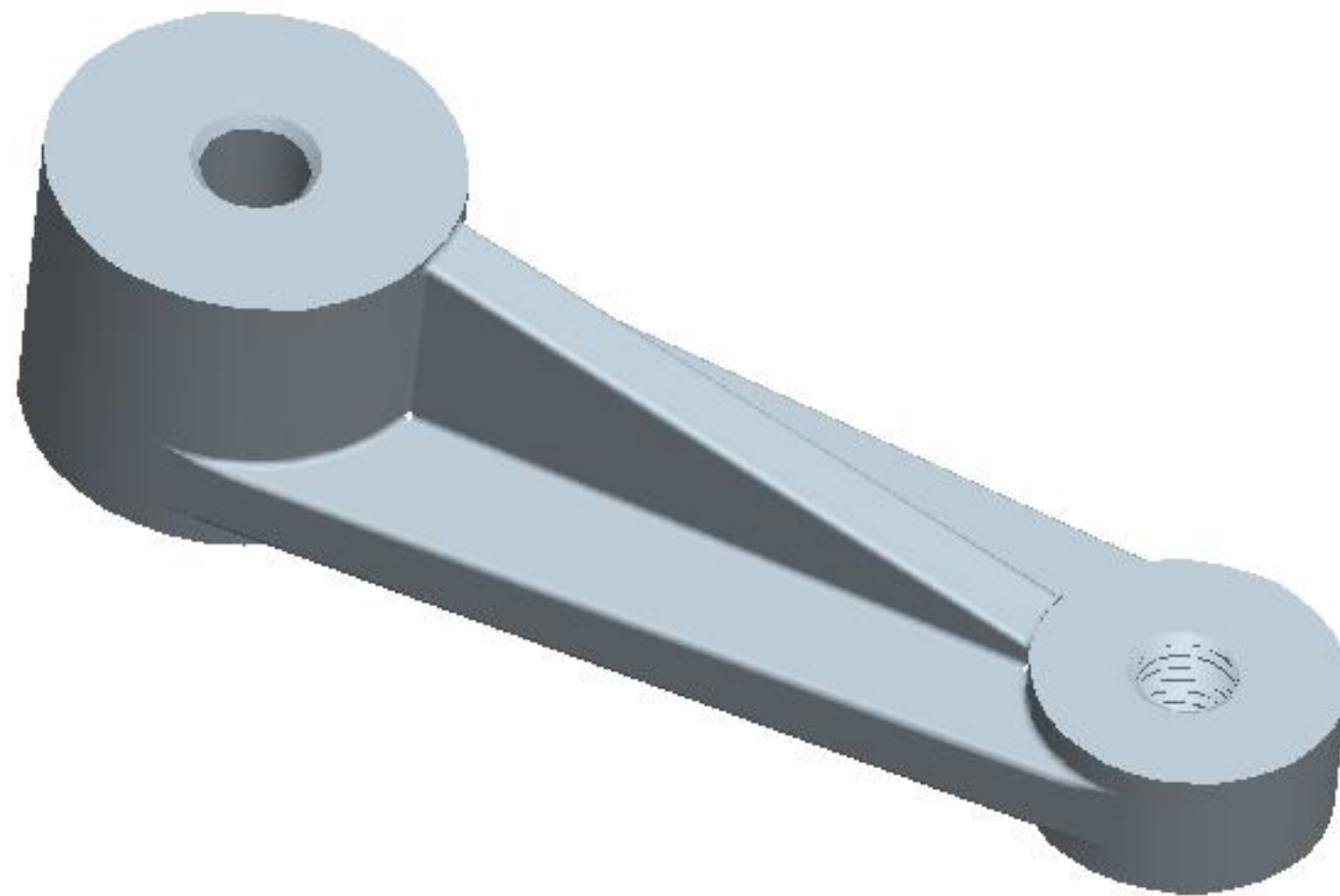




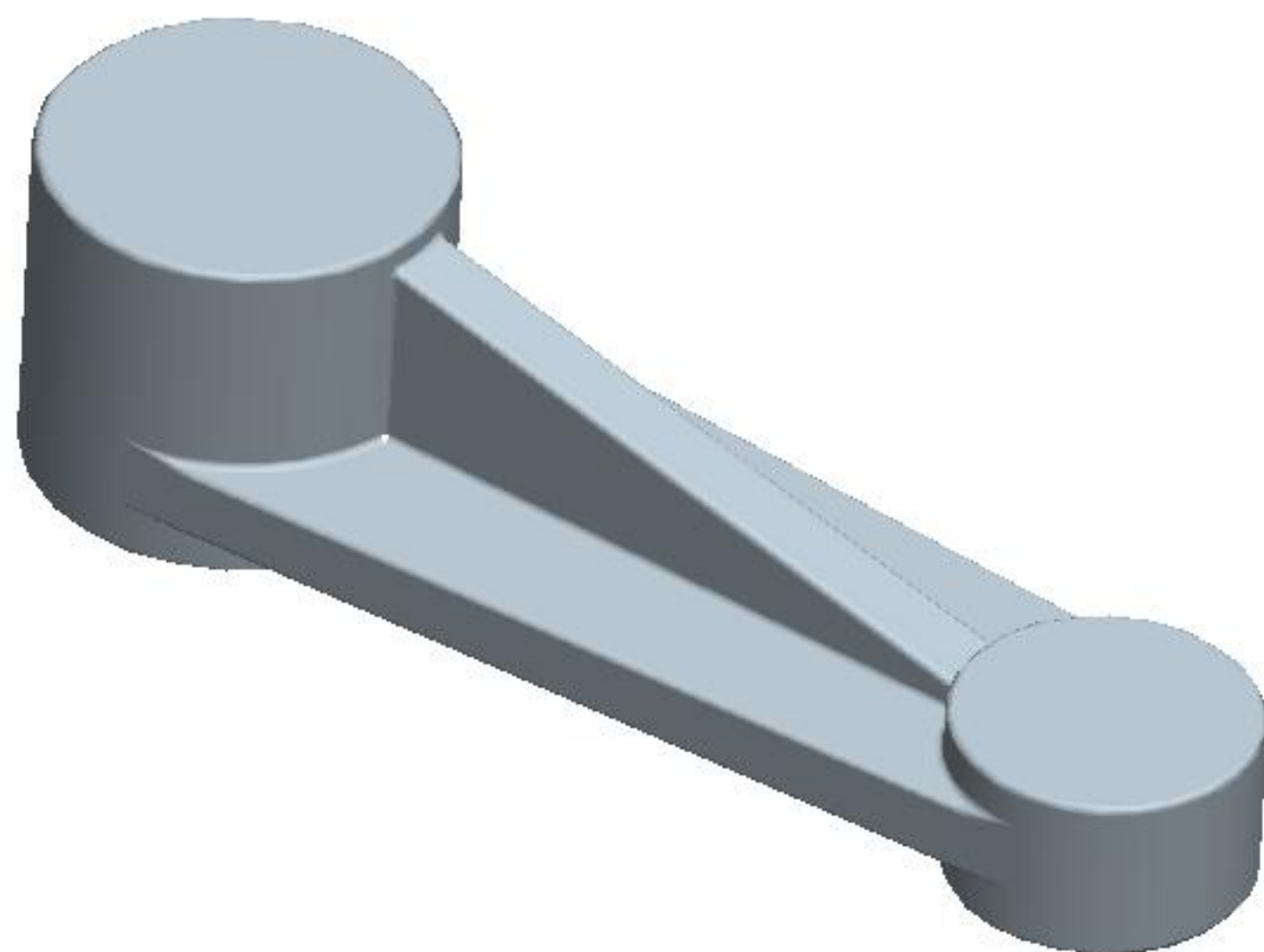
LESSON 6 – Feature Operations



INSTANCE: CLAMP_ARM_WO

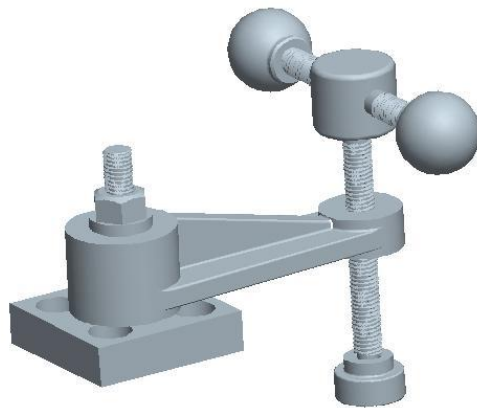


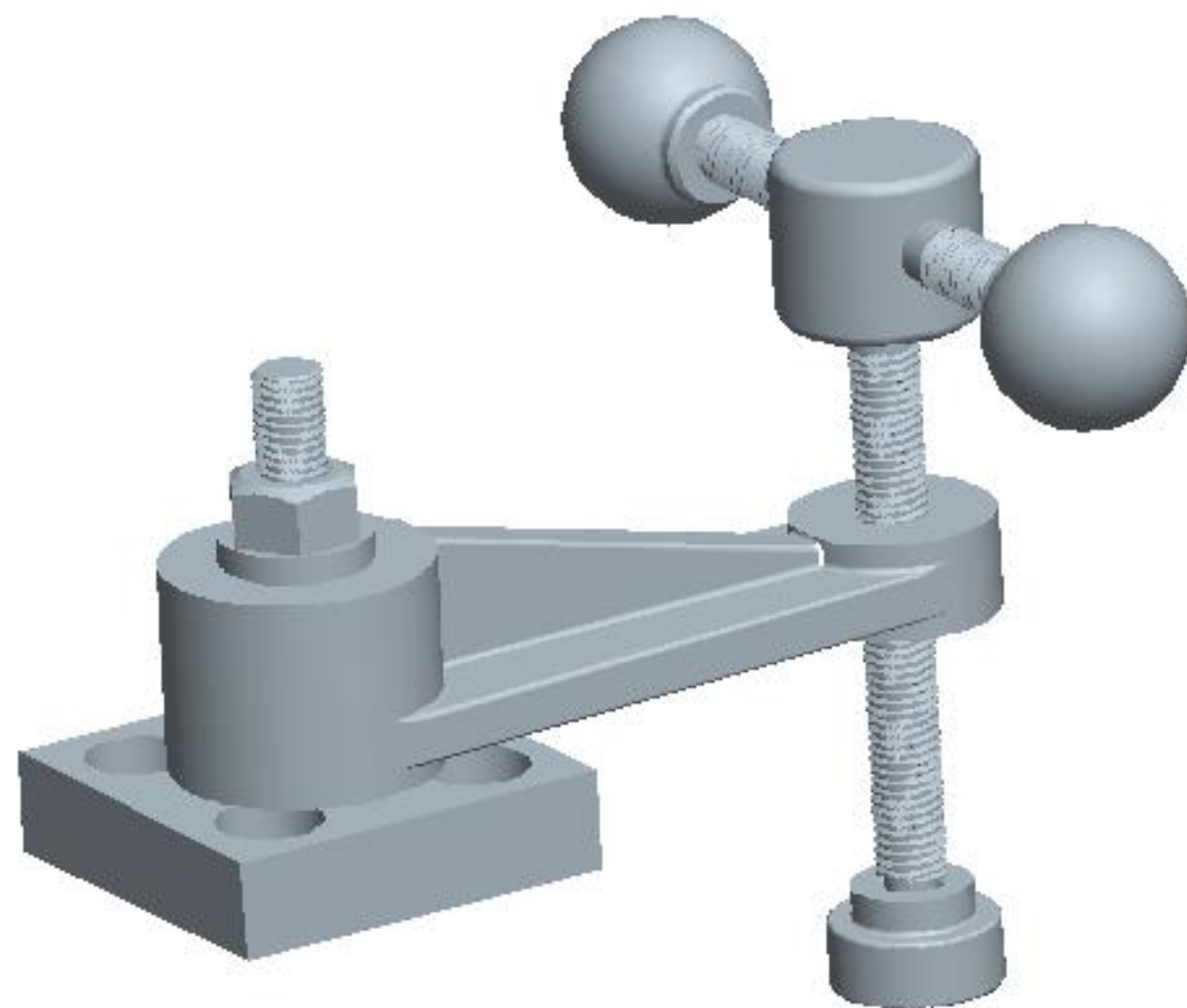
INSTANCE: CLAMP_ARM_DE



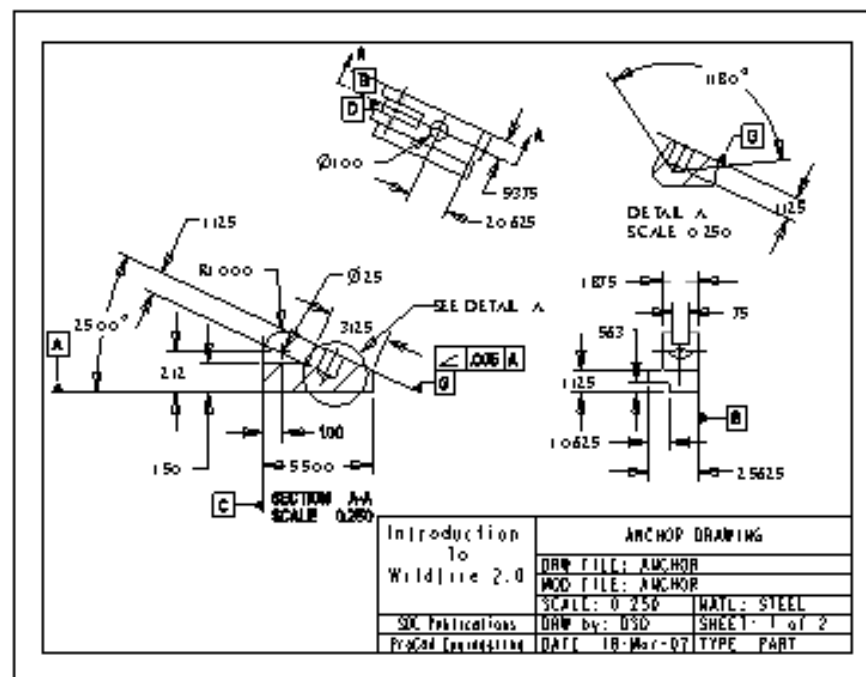
INSTANCE: CLAMP_ARM_WO

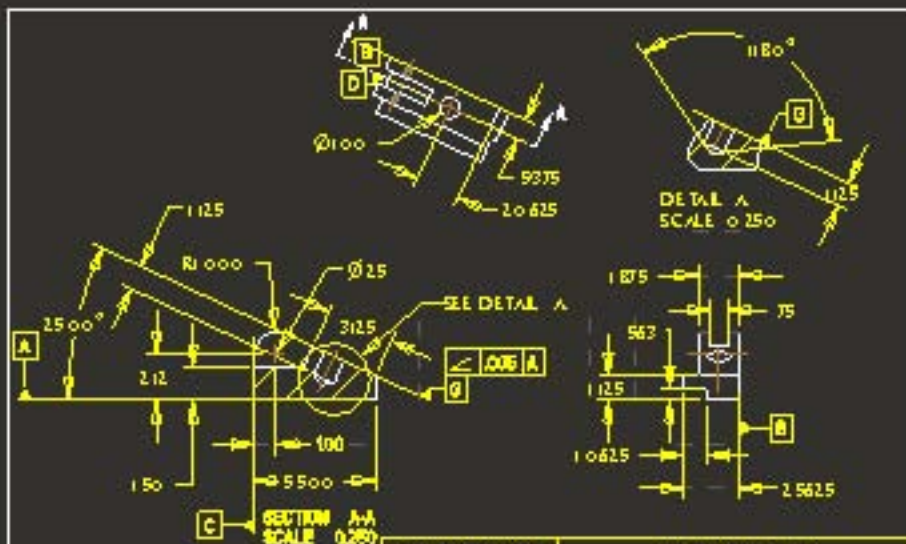
LESSON 7 – Assemblies



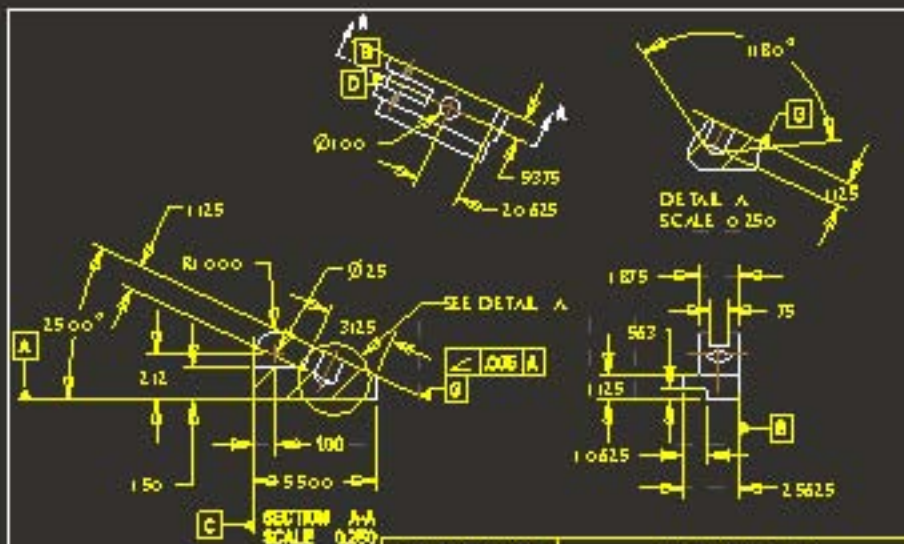


LESSON 8 – Part Drawings

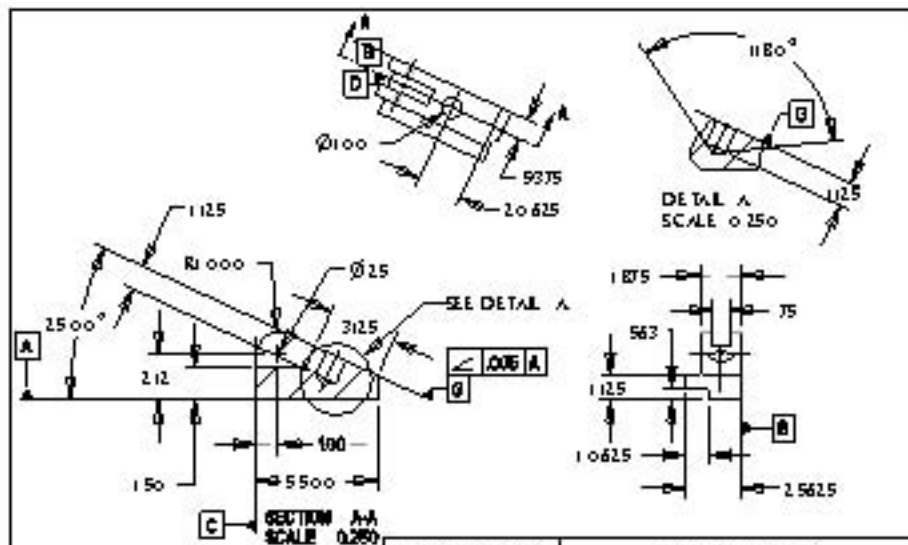




Introduction to Wildfire 2.0	ANCHOR DRAWING	
	DRW FILE: ANCHOR	
	MOD FILE: ANCHOR	
	SCALE: 0.250	MATL: STEEL
SOC Publications	DRW by: DSD	SHEET: 1 of 2
Project Engineering	DATE: 18-Mar-07	TYPE: PART



Introduction to Wildfire 2.0	ANCHOR DRAWING	
	DRW FILE: ANCHOR	
	MOD FILE: ANCHOR	
	SCALE: 0.250	MATL: STEEL
SOC Publications	DRW by: DSD	SHEET: 1 of 2
Project Engineering	DATE: 18-Mar-07	TYPE: PART



Introduction
to
Wildfire 2.0

SOC Publications
ProjCat Engineering

ANCHOR DRAWING

DRW FILE: ANCHOR

MOD FILE: ANCHOR

SCALE: 0.250

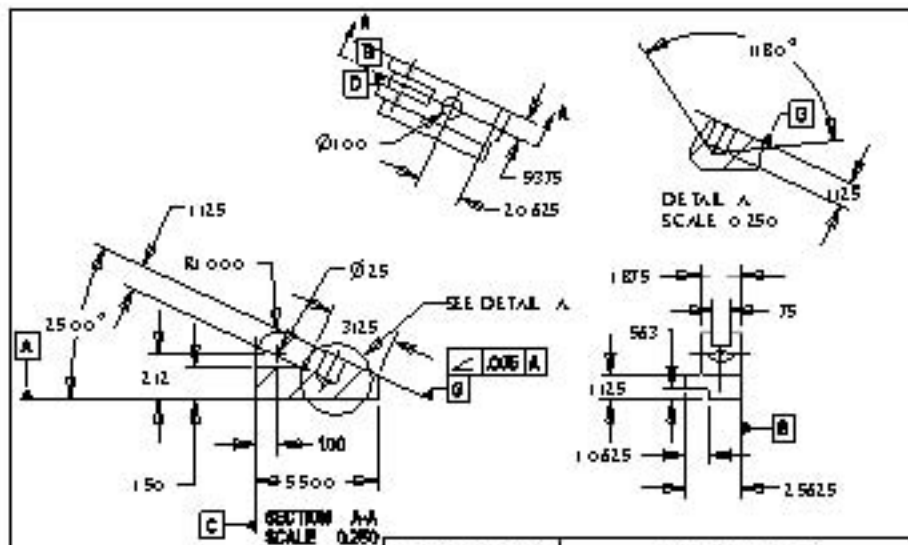
DRW by: OSD

DATE 18-Mar-07

MATL: STEEL

SHEET: 1 of 2

TYPE PART



Introduction
to
Wildfire 2.0

SOC Publications
ProCad Engineering

ANCHOR DRAWING

DRW FILE: ANCHOR

MOD FILE: ANCHOR

SCALE: 0.250

DRW by: OSD

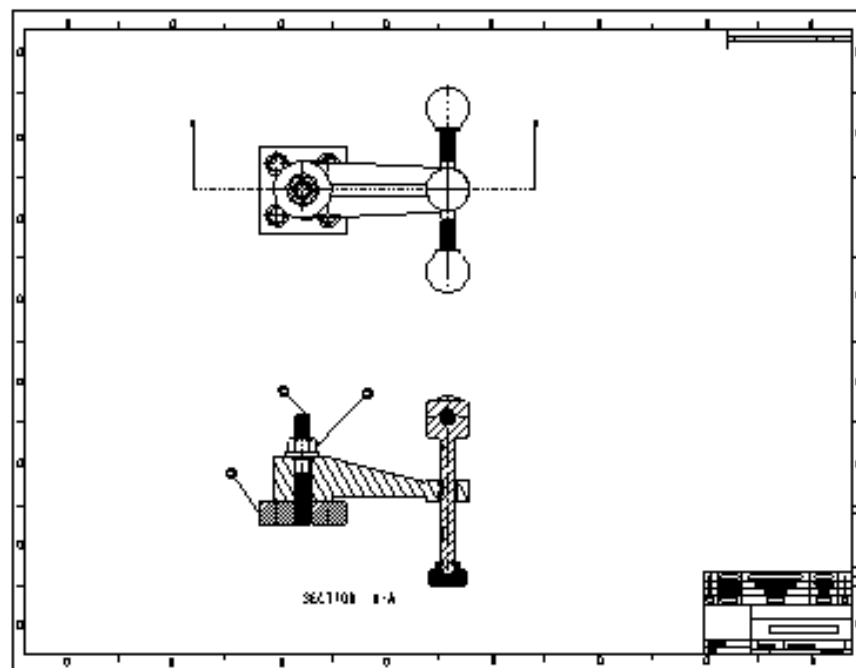
DATE: 18-Mar-07

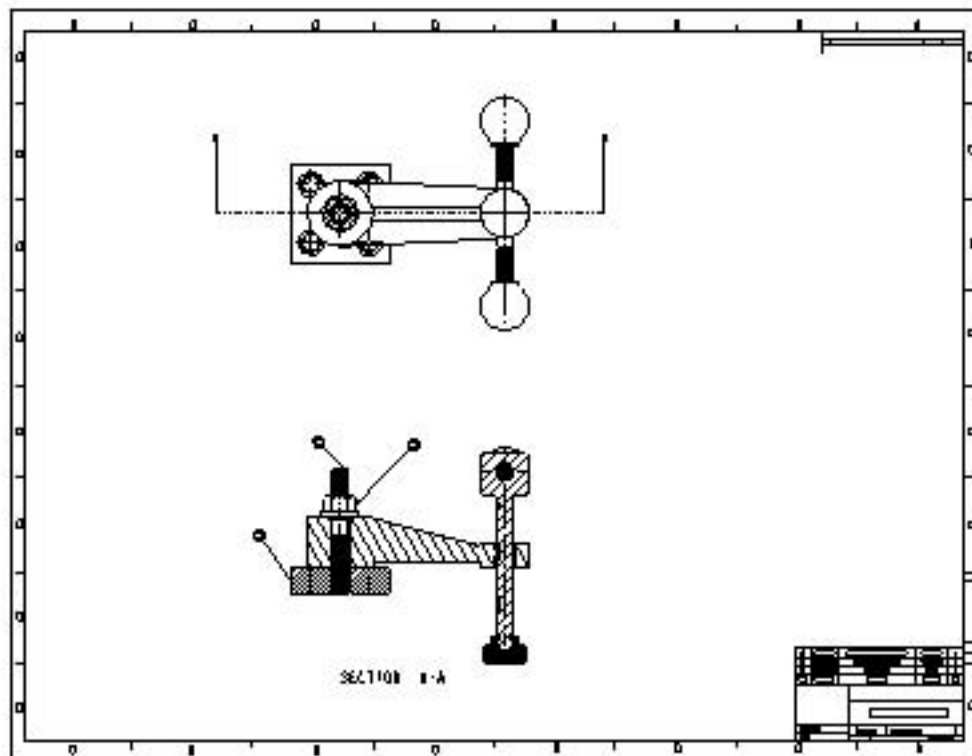
MATL: STEEL

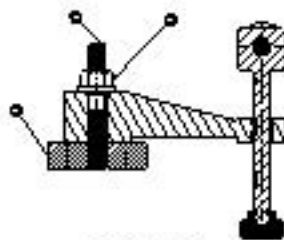
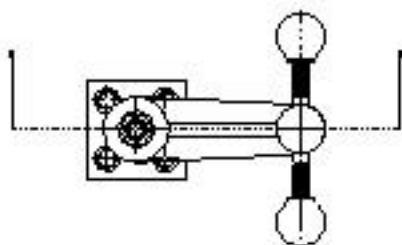
SHEET: 1 of 2

TYPE: PART

LESSON 9 – Assembly Drawings







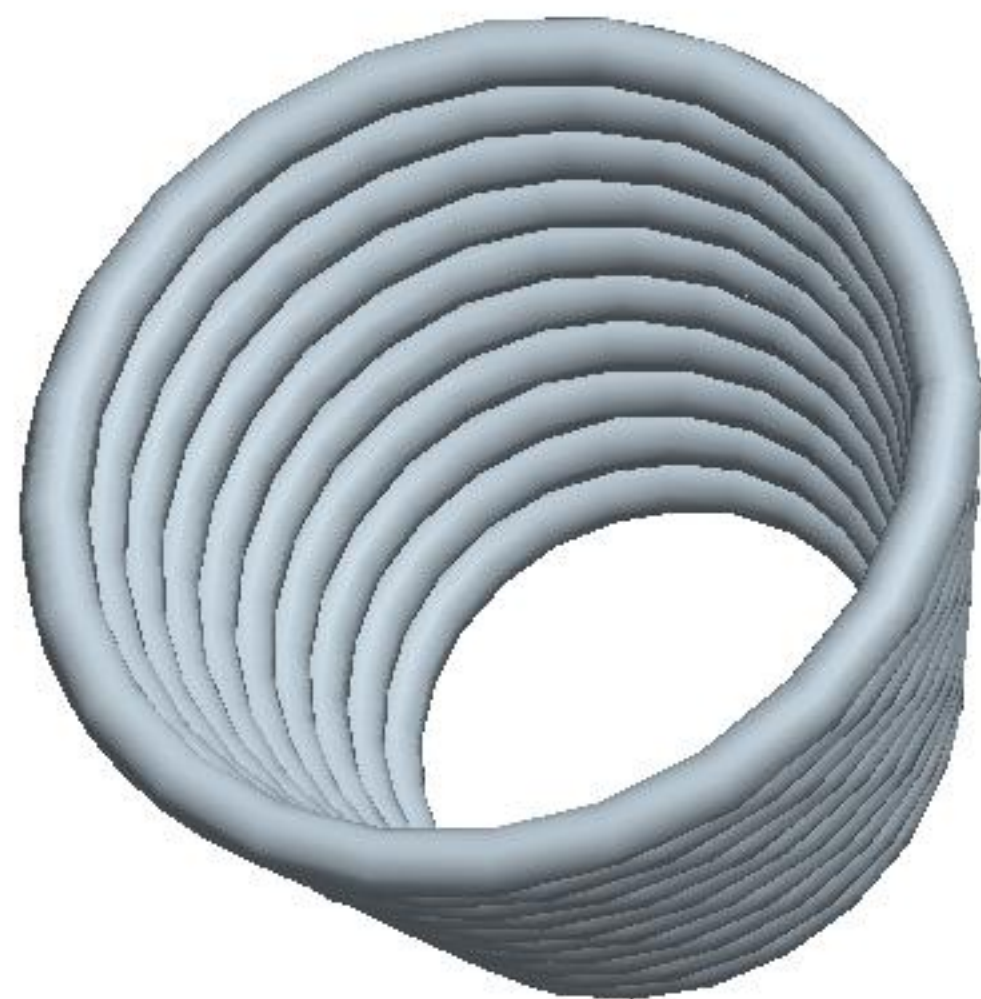
Section 11-4



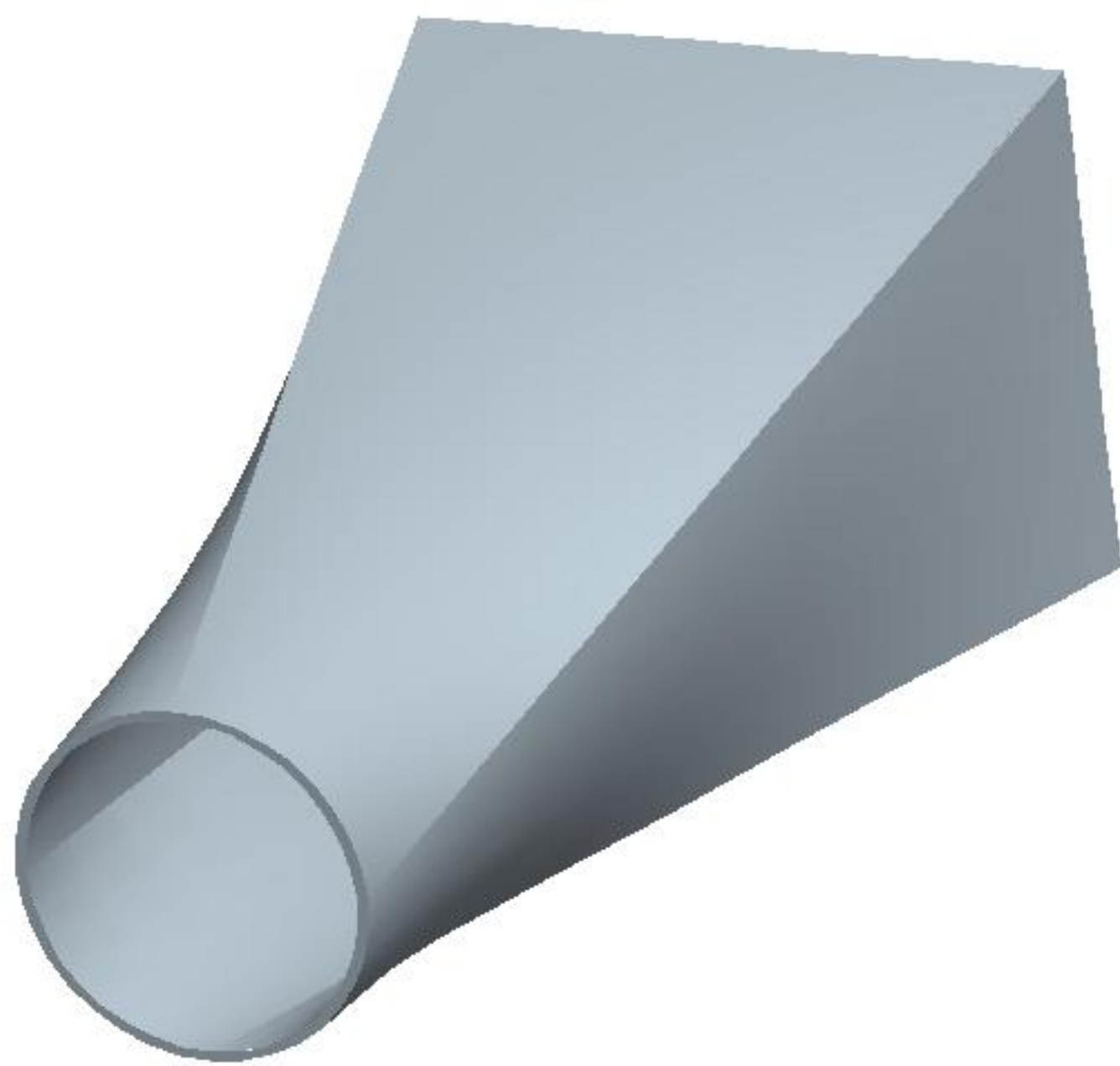
LESSON 10 – More Direct Modeling

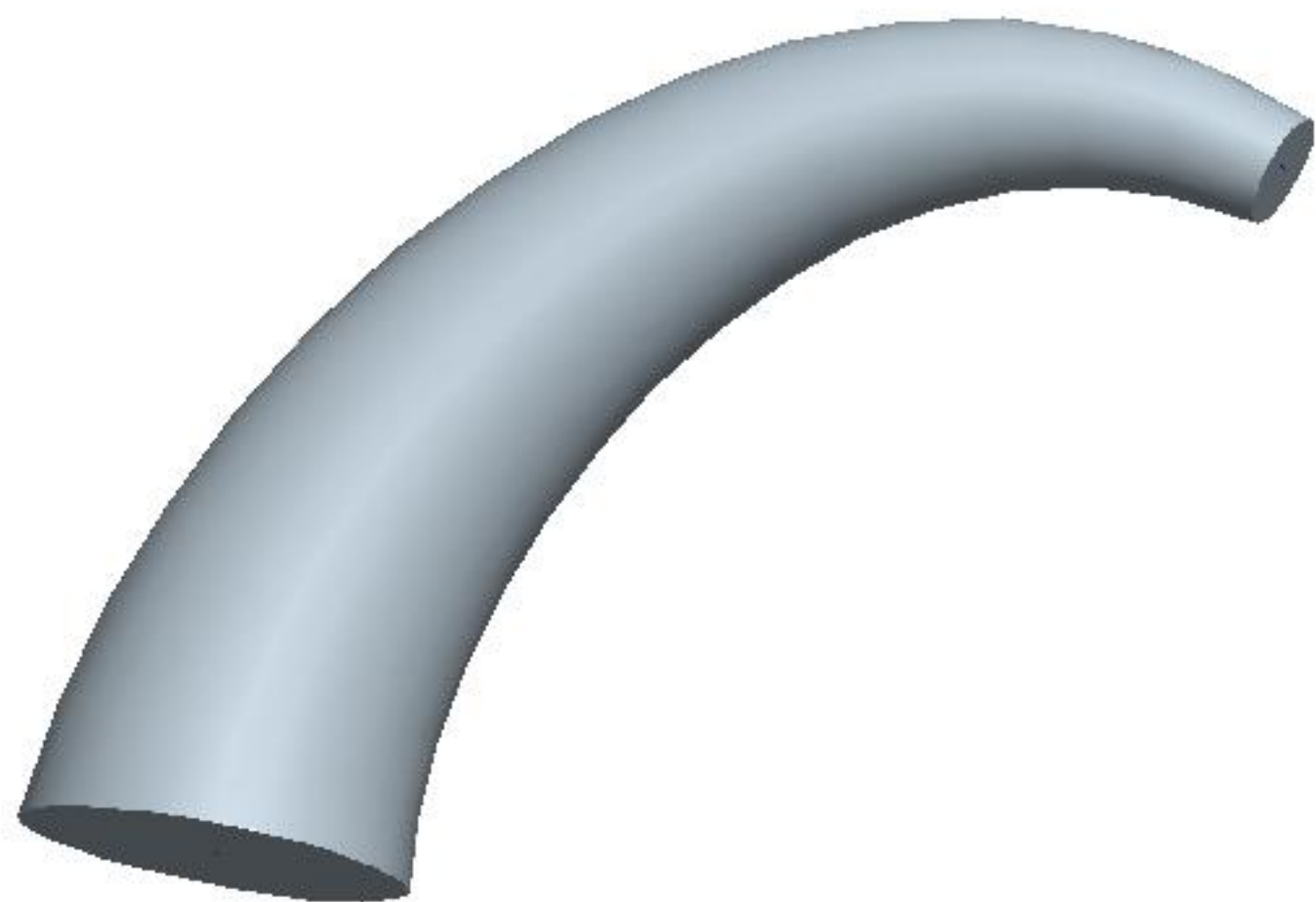


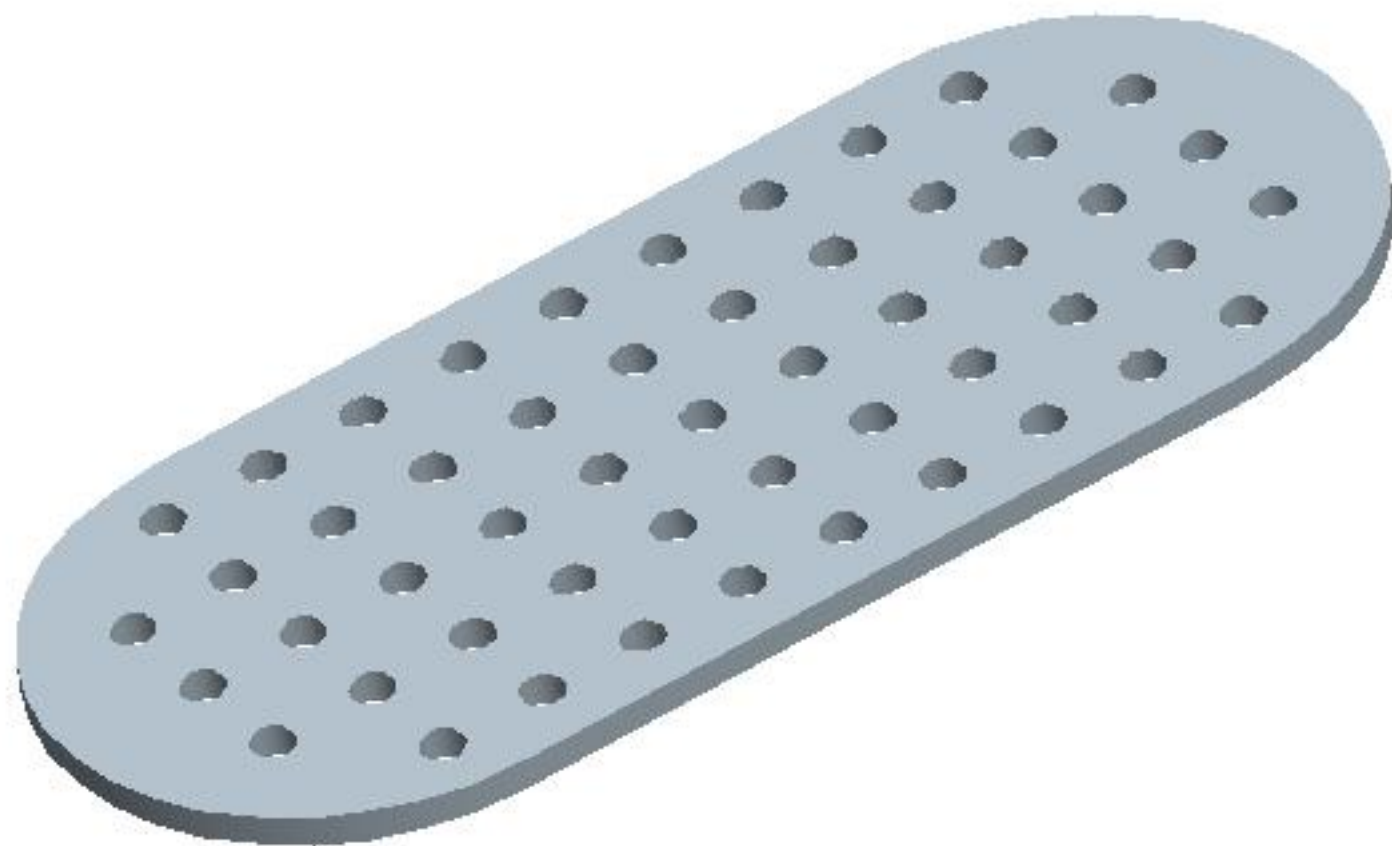




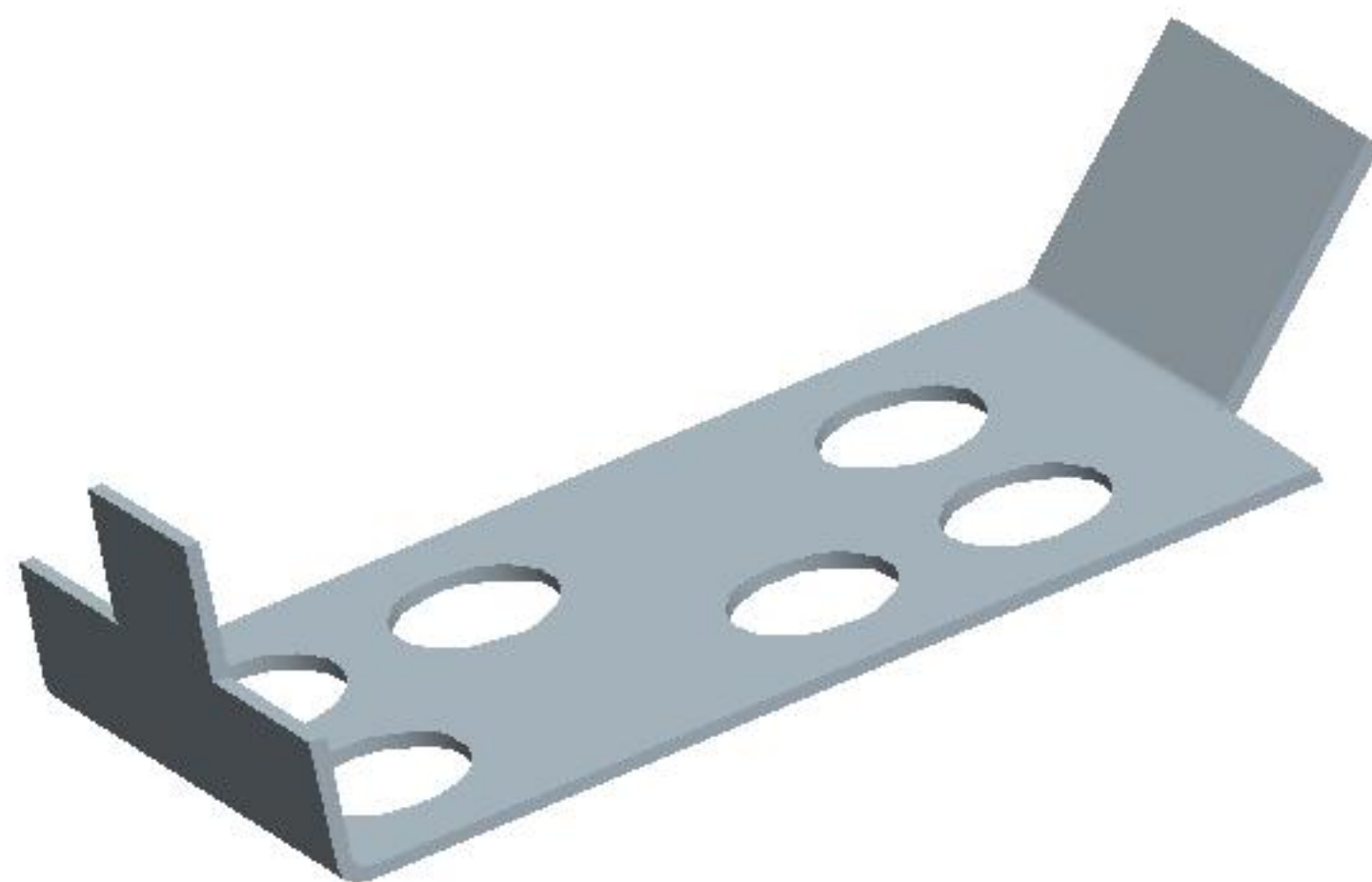


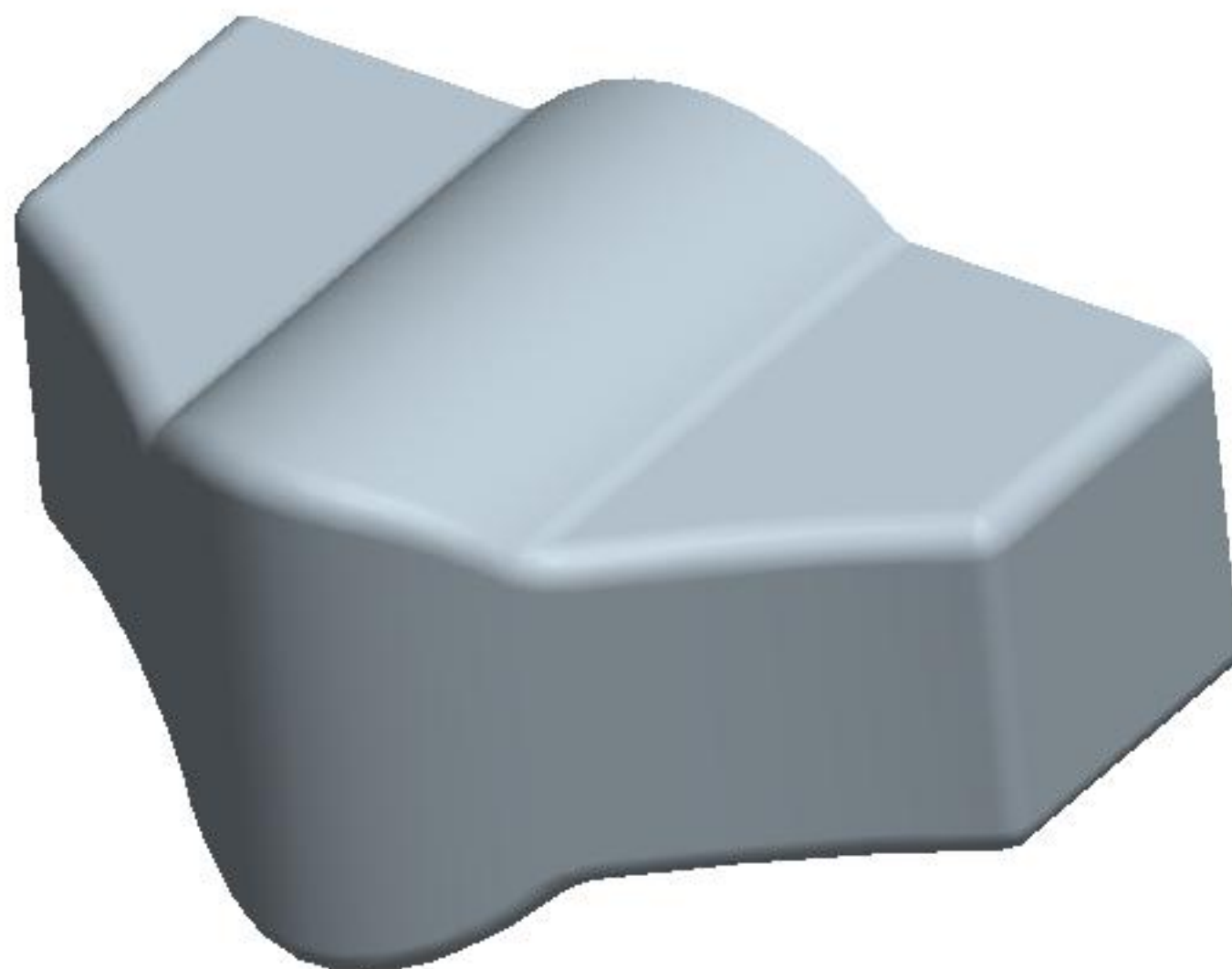




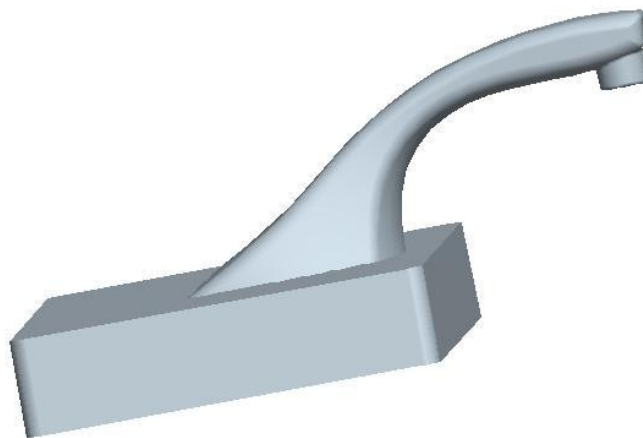


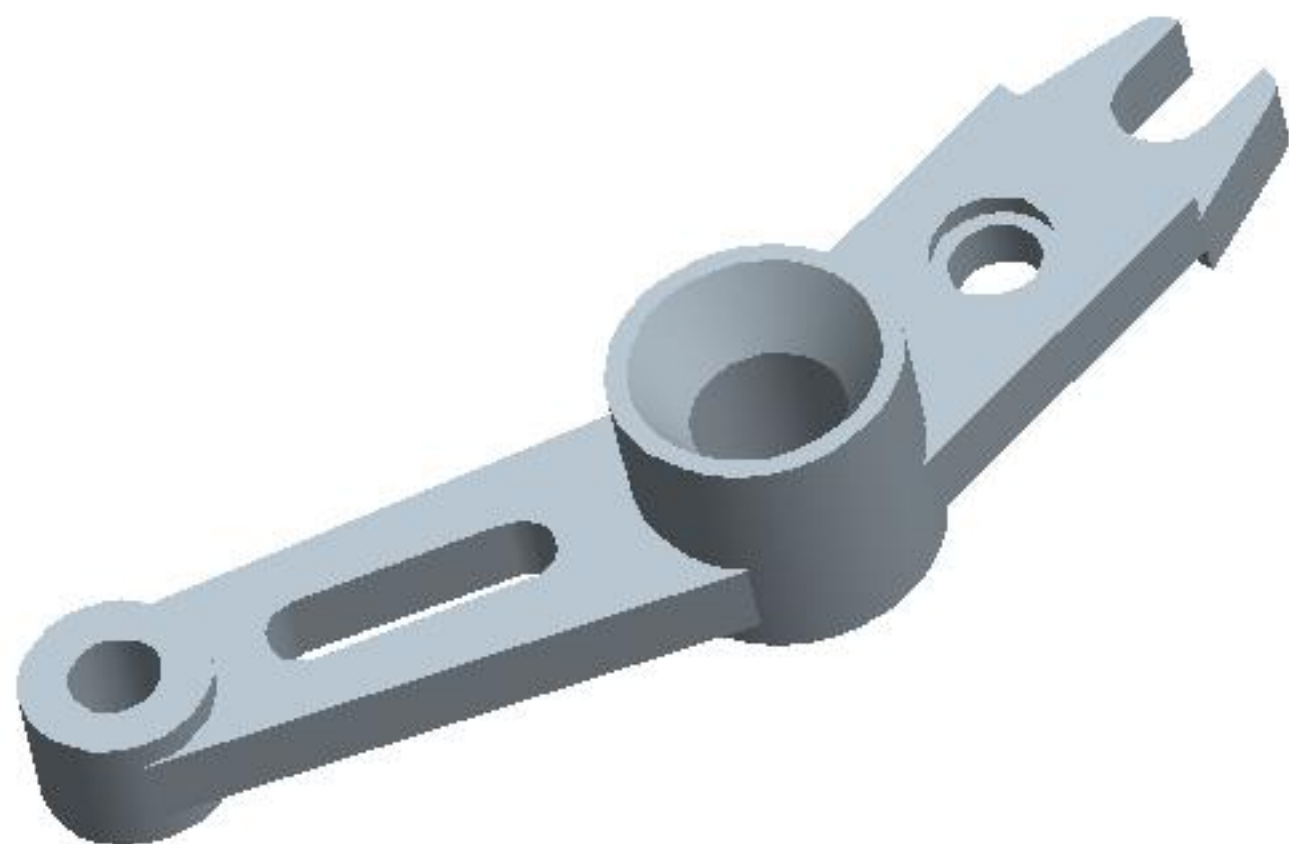


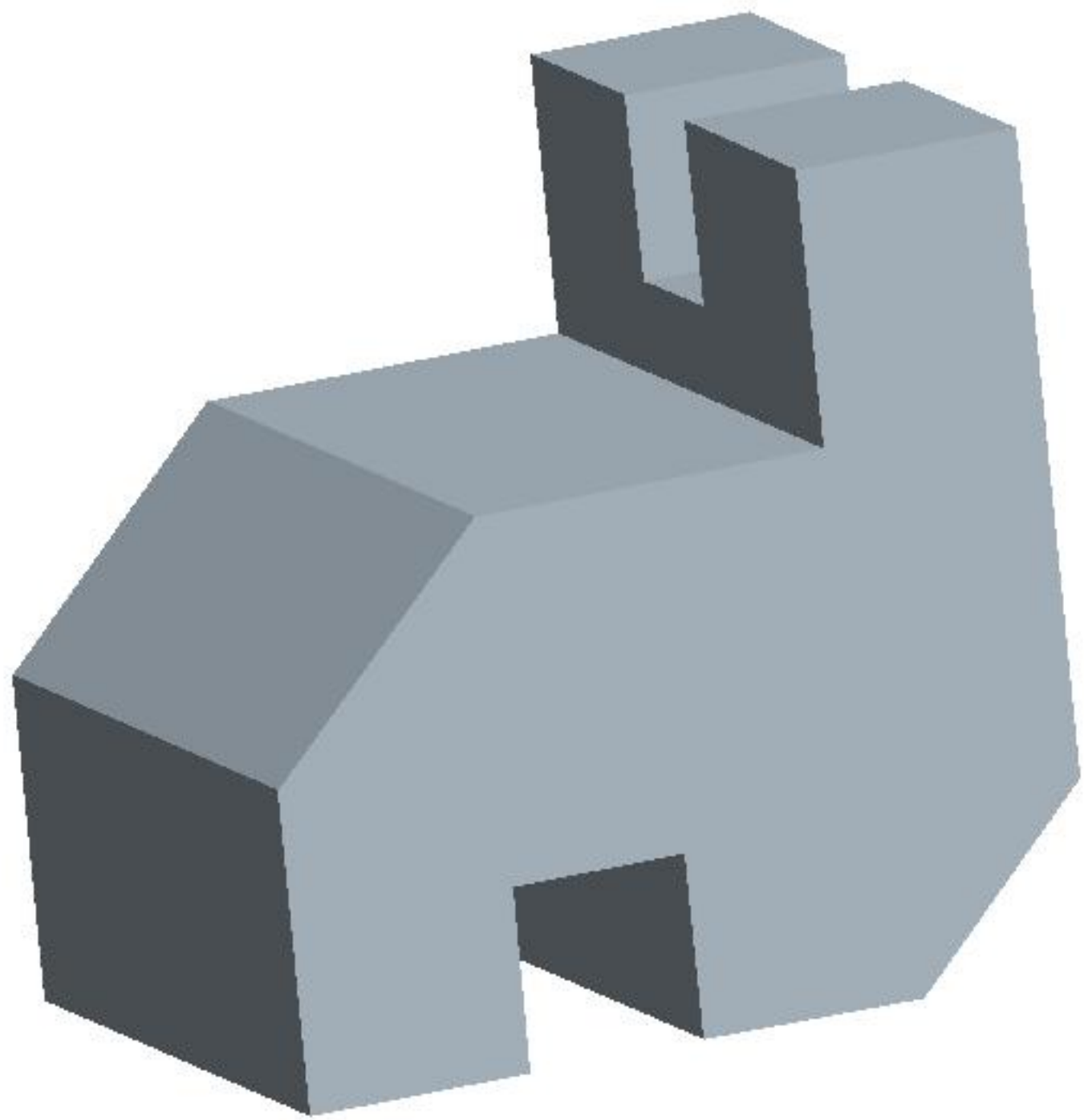


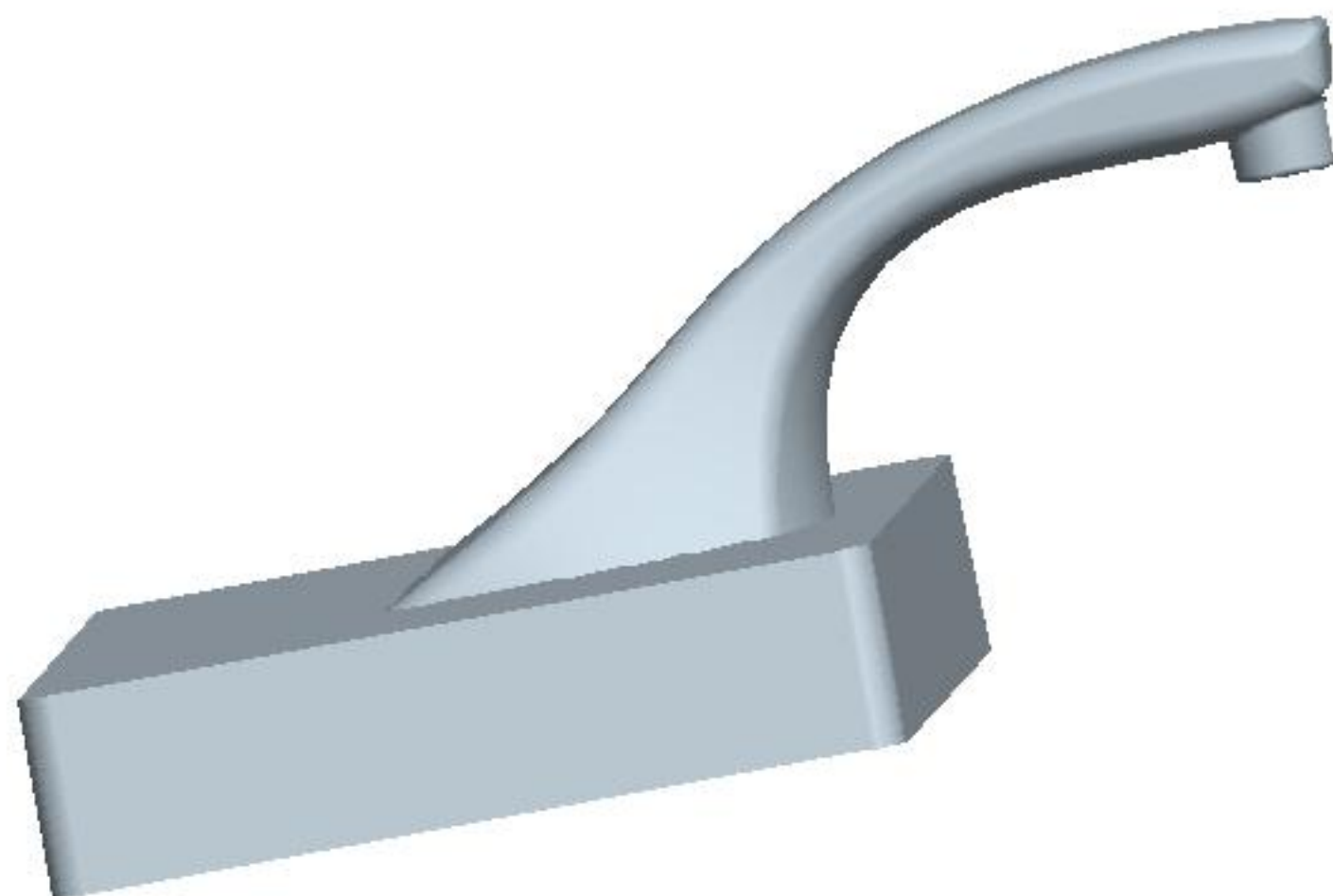


LESSON 11 – Extra Exercises

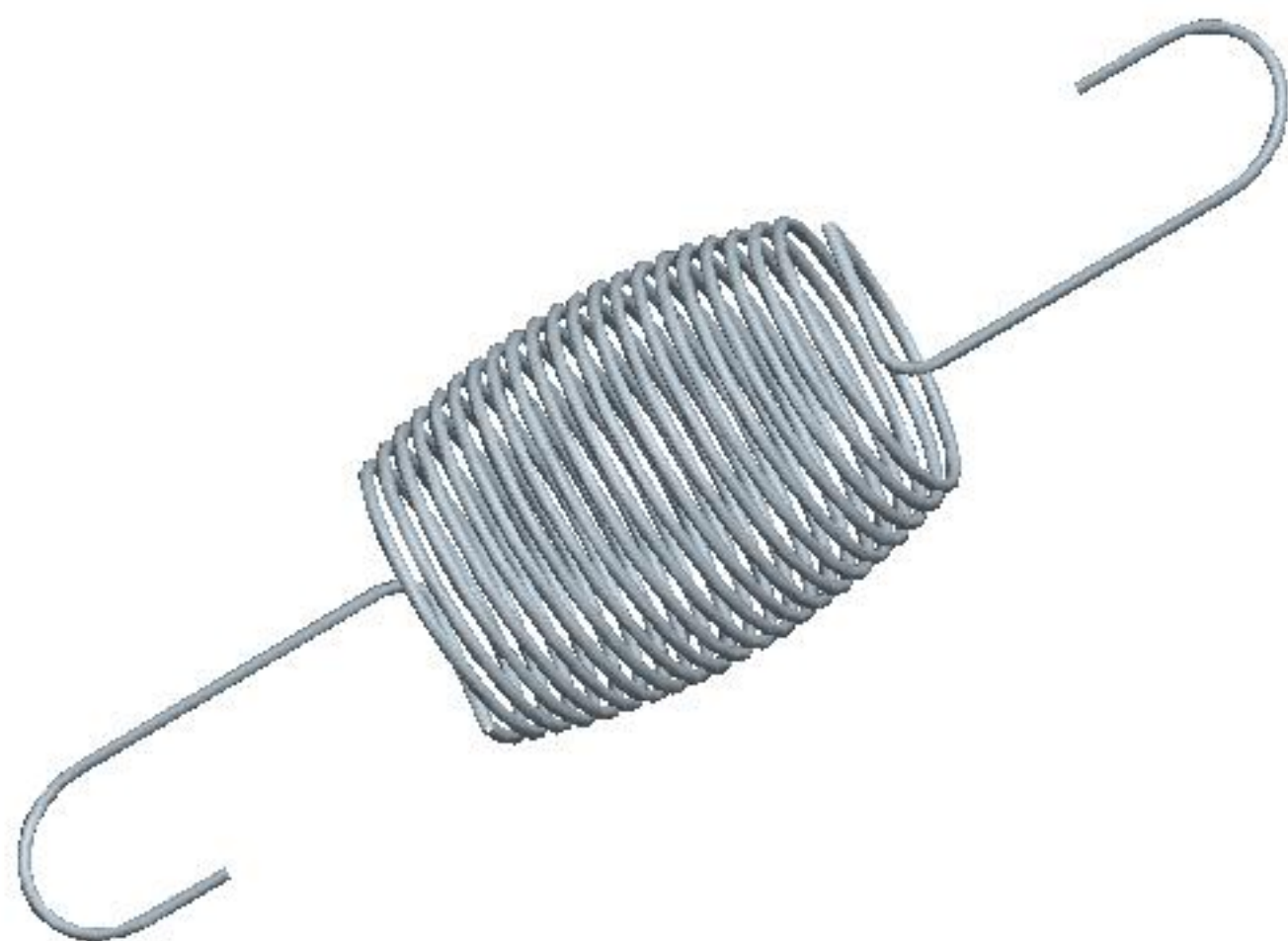


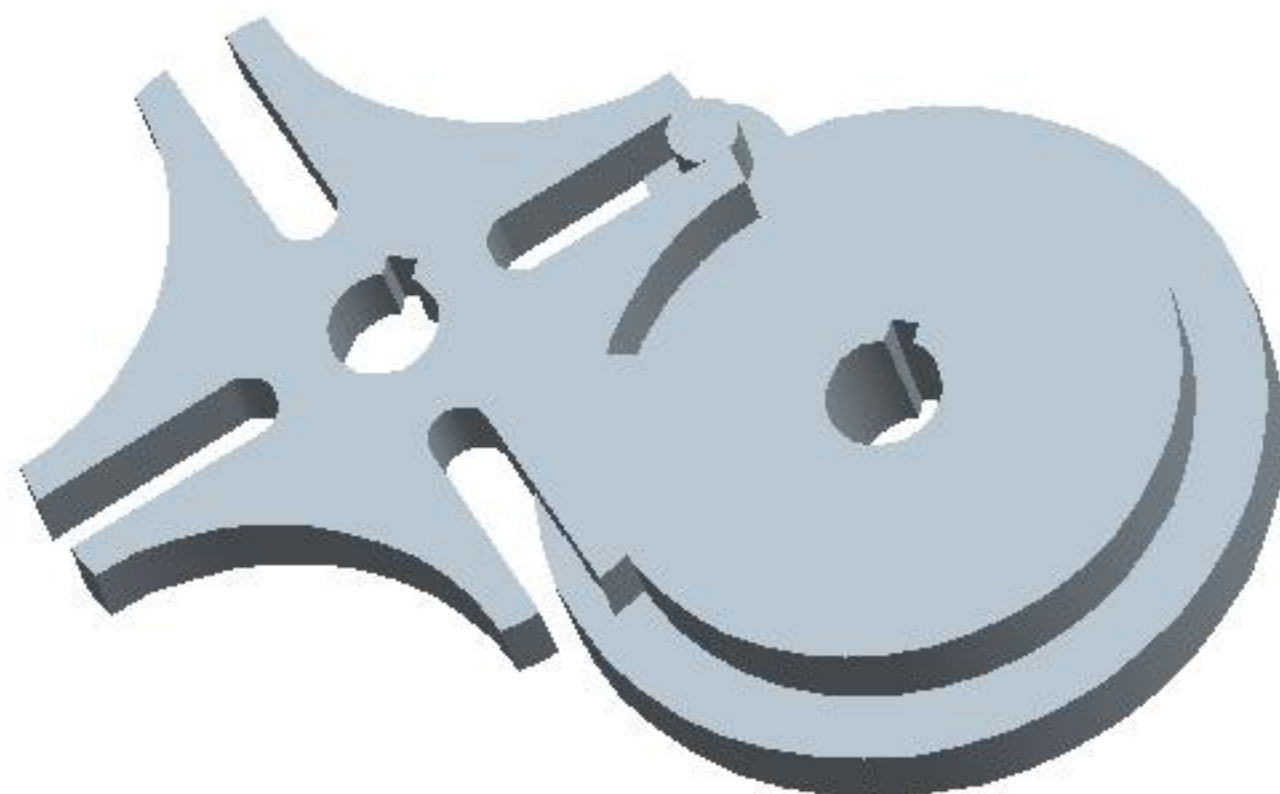


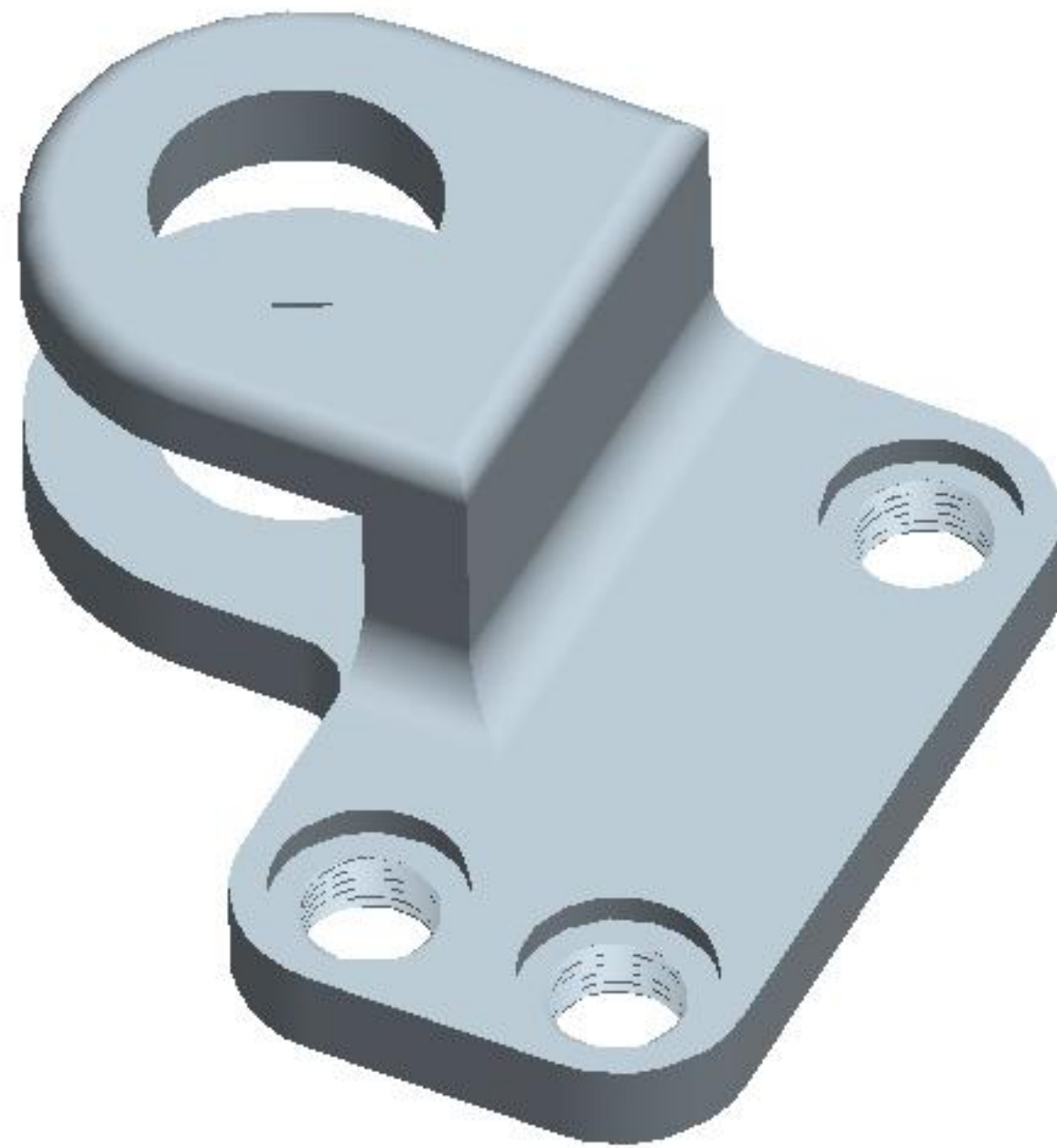


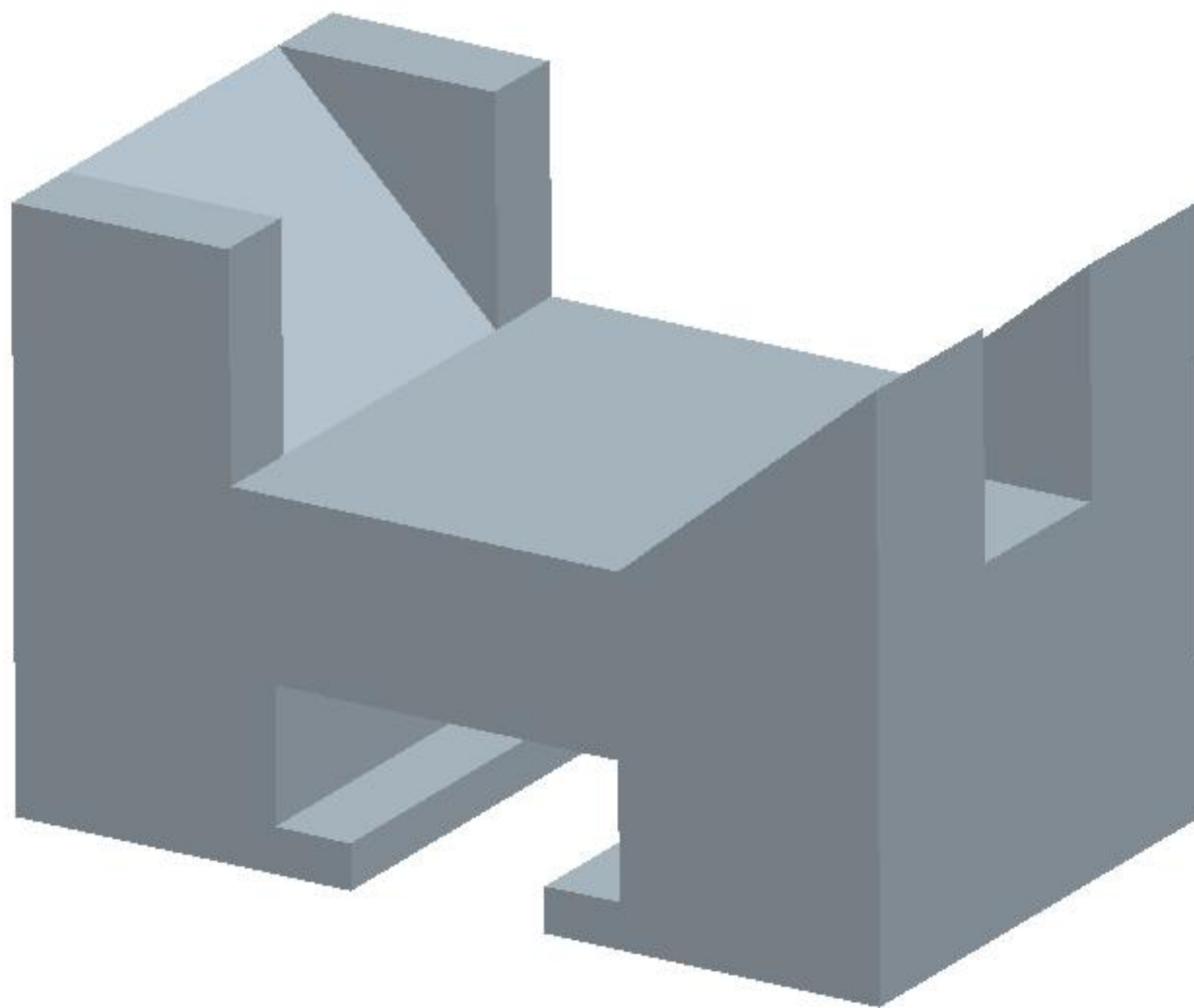


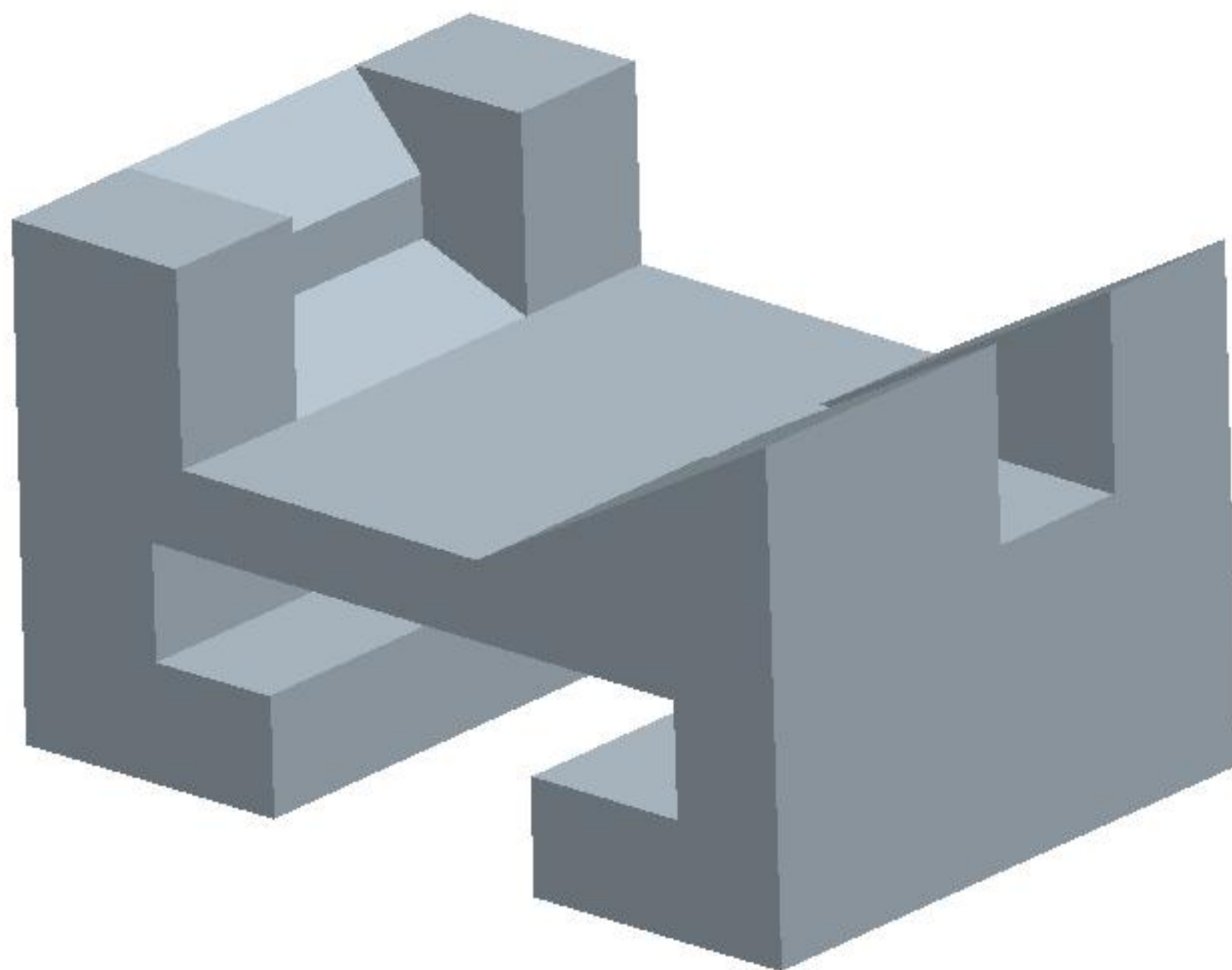


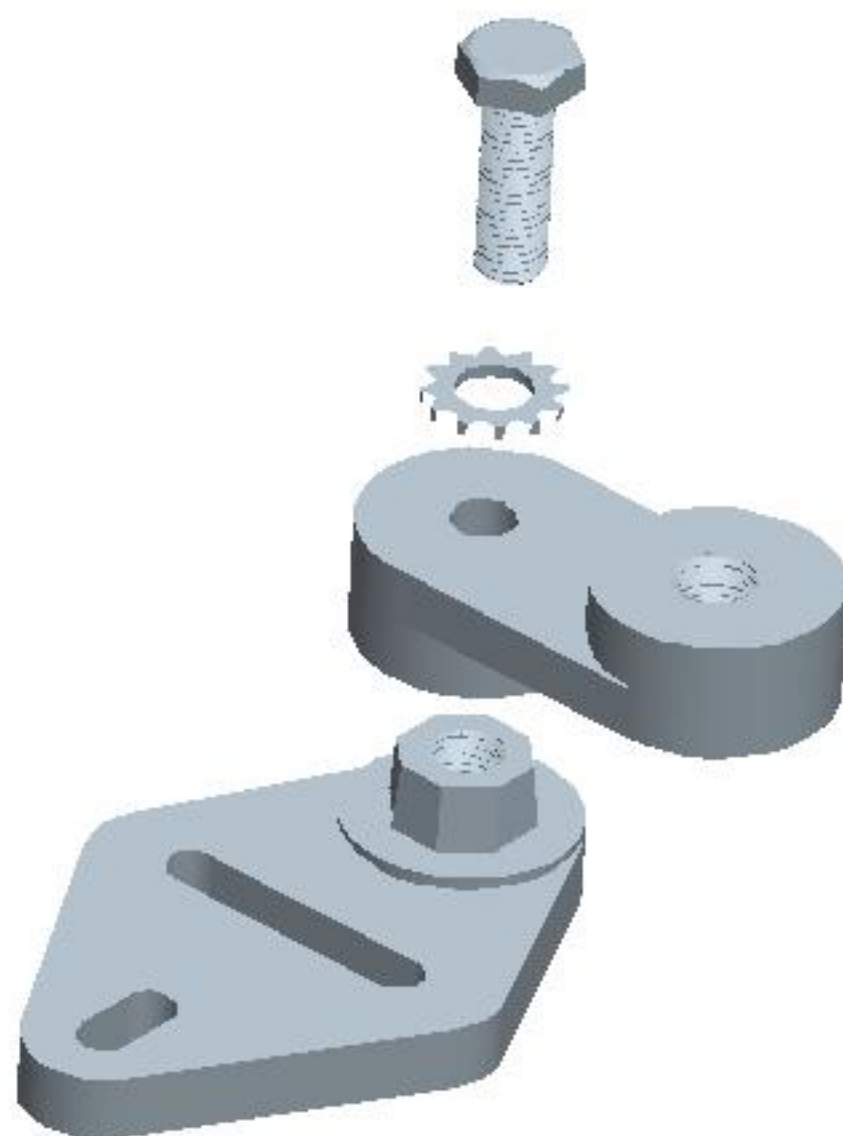




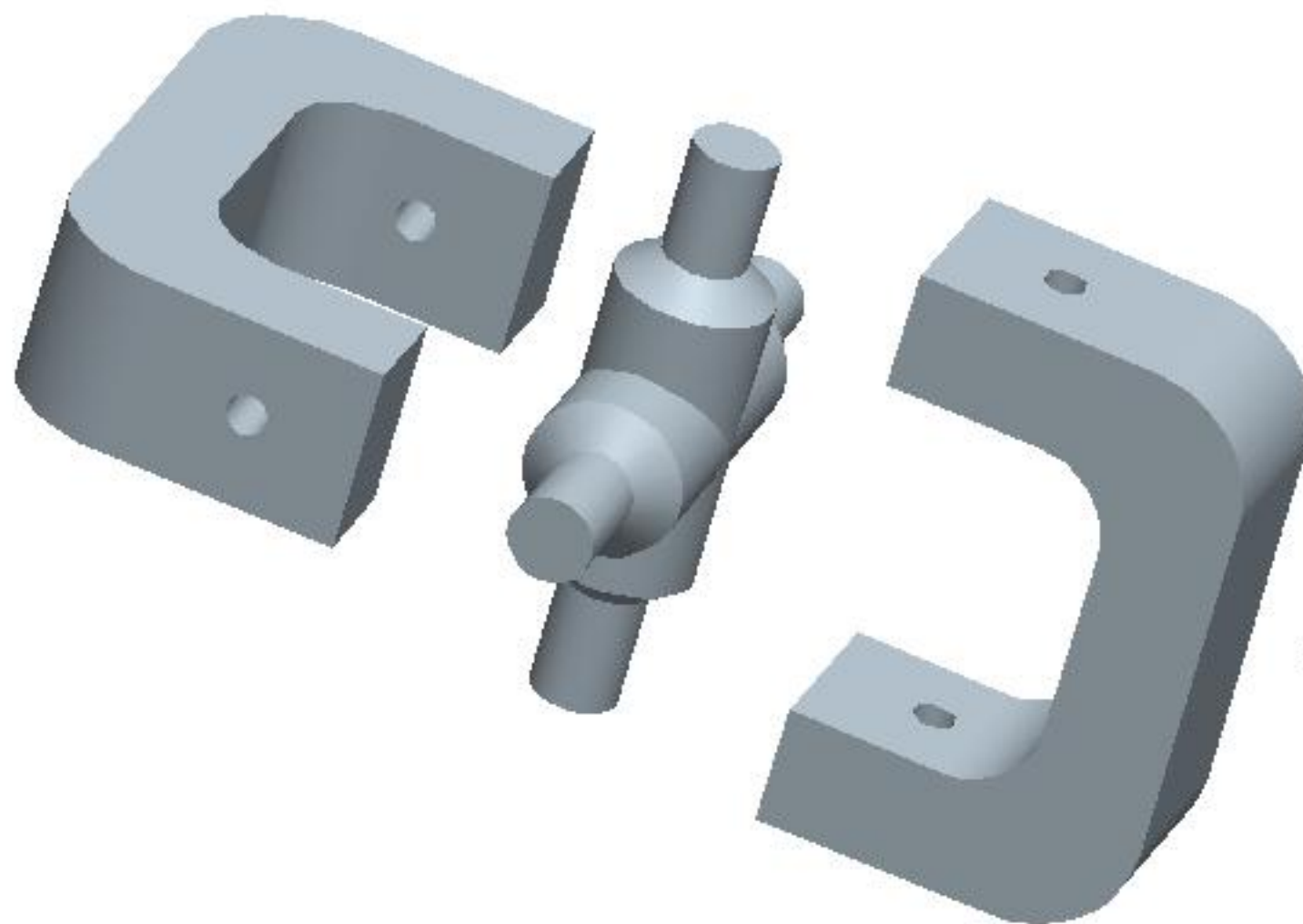








EXPLD STATE: EXP0001



EXPLD STATE: EXP0001

